

SPECIAL DISTRICTS DEPARTMENT
COUNTY OF SAN BERNARDINO

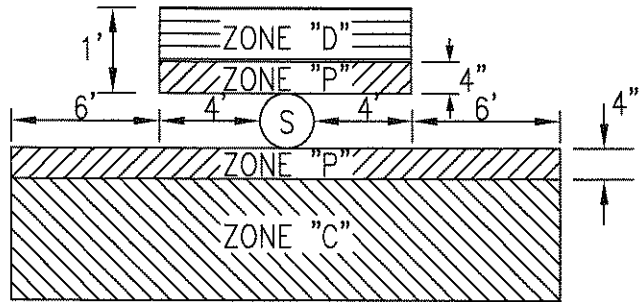
TABLE OF CONTENTS

DIVISION "H"
STANDARD DRAWINGS

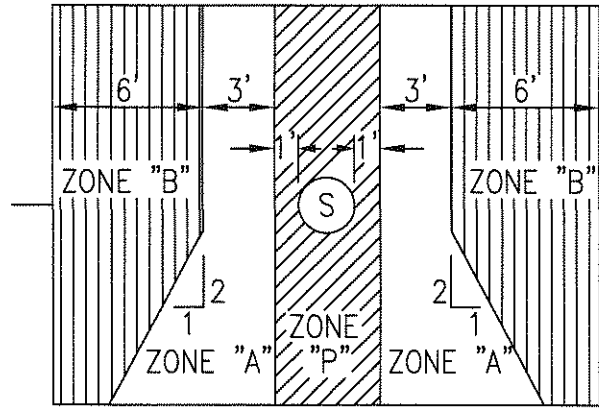
WATER

Drawing
No.

H-1	PROTECTION OF UTILITY WATER LINES FROM SANITARY SEWERS
H-2A	5 ¼" FIRE HYDRANT ASSEMBLY 6" VALVE OPENING P.V.C. MAIN
H-2B	6" FIRE HYDRANT ASSEMBLY STEEL MAIN
H-3A	THURST BLOCKS
H-3B	THURST BLOCKS
H-4A	1" SINGLE SERVICE CONNECTION
H-4B	1-1/2" OR 2" SINGLE SERVICE CONNECTION
H-5	FIRE DETECTOR CHECK VALVE ASSEMBLY
H-6	AIR AND VACUUM VALVE ASSEMBLY
H-7A	4" & 6" BLOWOFF ASSEMBLY - P.V.C. MAINS
H-7B	4" & 6" BLOWOFF ASSEMBLY - STEEL MAIN
H-8A	4" & 6" FLUSH-OUT ASSEMBLY – A.C. AND P.V.C. MAINS
H-8B	4" & 6" FLUSH-OUT ASSEMBLY – STEEL MAIN
H-9	SERVICE CONNECTIONS TO WATER MAINS
H-10	PRESSURE REDUCING STATION
H-11	VALVE BOX
H-12	CONCRETE BLANKET
H-13	DOUBLE CHECK VALVE ASSEMBLY
H-14	REDUCED PRESSURE PRINCIPLE BACKFLOW DEVICE
H-15	TRENCH REPAIR IN ROADWAYS
H-16	TYPICAL TRENCH DETAIL
H-17	WATER MAIN DROP SECTION DETAIL
H-18	BACKFILL STABILIZER DETAIL



CROSSING
SANITARY SEWERS AND
UTILITY WATER LINES



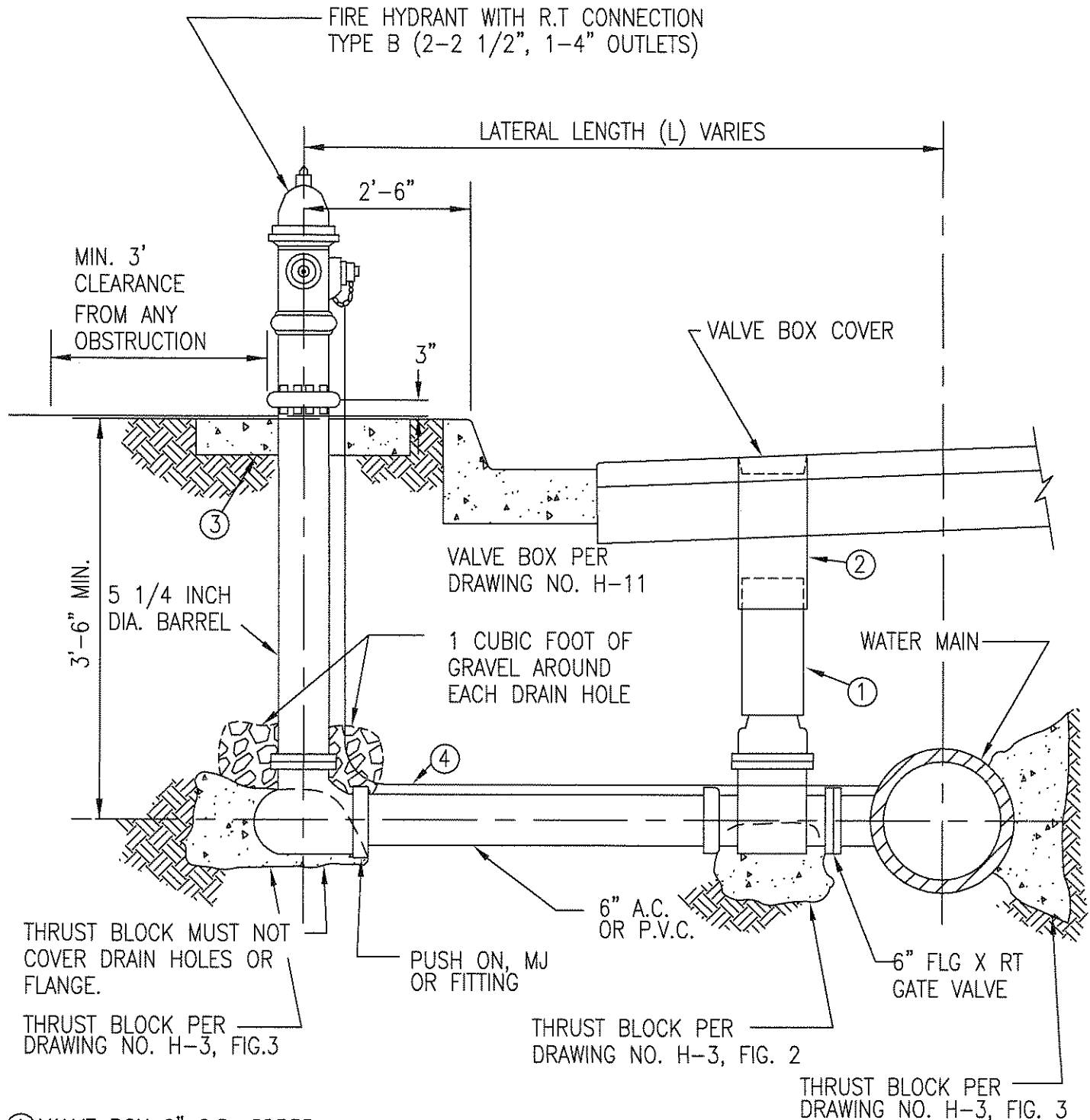
PARALLEL
SANITARY SEWERS AND
UTILITY WATER LINES

ZONE "P"	WATER MAIN CONSTRUCTION IN THIS ZONE IS PROHIBITED.
ZONE "A"	NO WATER MAINS SHALL BE CONSTRUCTED IN THIS ZONE WITHOUT APPROVAL FROM THE HEALTH AGENCY.
ZONE "B"	WATER MAINS IN THIS ZONE SHALL BE CONSTRUCTED OF SPECIAL PIPE AS LISTED BELOW.
ZONE "C"	WATER MAINS SHALL HAVE NO JOINTS WITHIN ZONE "C" AND SHALL BE CONSTRUCTED OF SPECIAL PIPE AS LISTED BELOW.
ZONE "D"	WATER MAINS SHALL HAVE NO JOINTS WITHIN ZONE "D" AND SHALL BE CONSTRUCTED OF SPECIAL PIPE AS LISTED BELOW.

SPECIAL PIPE ALTERNATIVES:

1. DUCTILE IRON PIPE WITH HOT DIP BITMINOUS COATING.
2. DIPPED AND WRAPPED ONE-FOURTH INCH THICK WELDED STEEL PIPE.
3. CLASS 200 PRESSURE RATED PLASTIC WATER PIPE (DR 14 PER AWWA C900) OR EQUIVALENT.
4. REINFORCED CONCRETE PRESSURE PIPE, STEEL CYLINDER TYPE, PER AWWA (C300-74 OR C301-79 OR C303-70).

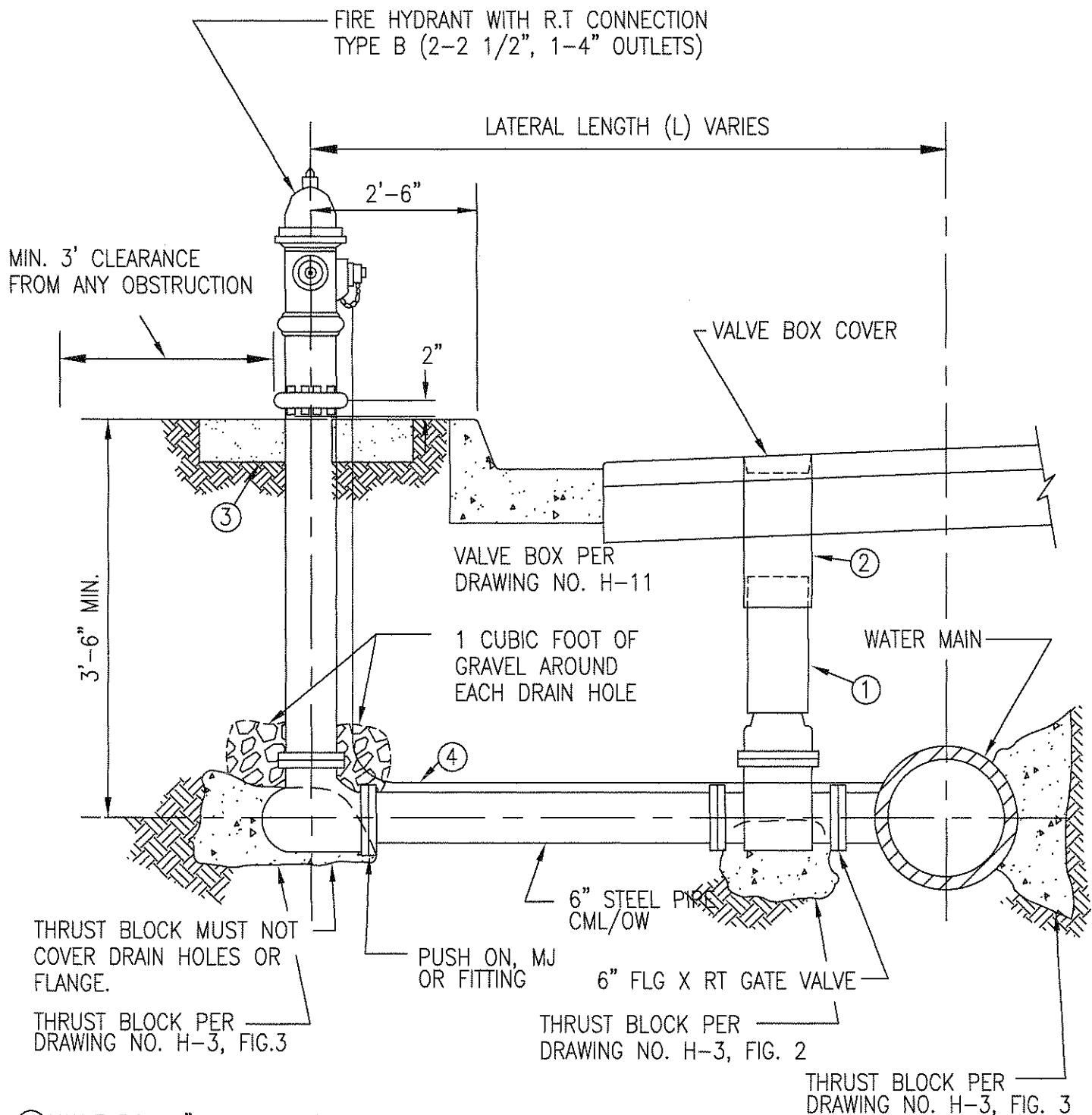
	OFFICE OF SPECIAL DISTRICTS COUNTY OF SAN BERNARDINO	
	PROTECTION OF UTILITY WATER LINES FROM SANITARY SEWERS	
	APPROVAL	DRAWING NUMBER
	Gary Martin DISTRICT ENGINEER	8-02-86 DATE
		H-1



- ① VALVE BOX 6" O.D. SDR35
- ② 6 5/8" O.D. VALVE BOX TOP
10 GA. STEEL 6"x18" SLIDER
- ③ 3'x3'x6" CONCRETE PAD
BROOM BRUSHED.
- ④ 14 GA. COATED SOUNDING WIRE

TECH. SPEC. REFERENCE
FIRE HYDRANT ASSEMBLIES--
SECTION 4.0

	OFFICE OF SPECIAL DISTRICTS COUNTY OF SAN BERNARDINO	
	5 1/4" FIRE HYD. ASSY 6" VALVE OPENING P.V.C. MAIN	
	APPROVAL	DRAWING NUMBER
	Gary Martin	8-02-86
	DISTRICT ENGINEER	DATE
10-31-07		H-2A
REVISED		



- ① VALVE BOX 6" O.D. SDR35
- ② 6 5/8" O.D. VALVE BOX TOP
10 GA. STEEL 6"x18" SLIDER
- ③ 3'x3'x6" CONCRETE PAD
BROOM BRUSHED.
- ④ 14 GA. COATED SOUNDING WIRE

TECH. SPEC. REFERENCE
FIRE HYDRANT ASSEMBLIES-
SECTION 4.0

	OFFICE OF SPECIAL DISTRICTS COUNTY OF SAN BERNARDINO	
	6" FIRE HYDRANT ASSEMBLY STEEL MAIN	
	APPROVAL	DRAWING NUMBER
	Gary Martin DISTRICT ENGINEER	8-02-86 DATE
REVISED		H-2B

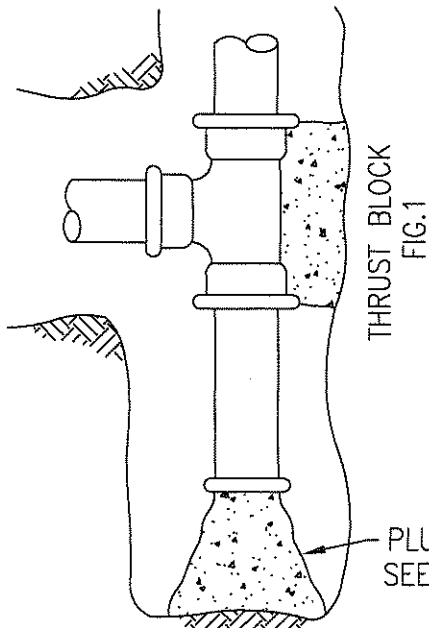
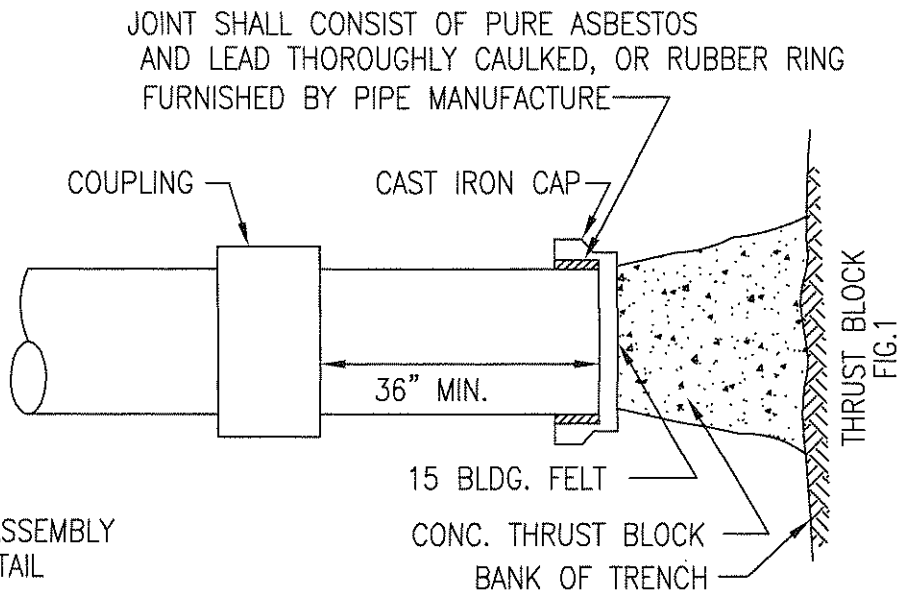


FIG. 1
PLAN VIEW



PLUG ASSEMBLY DETAIL

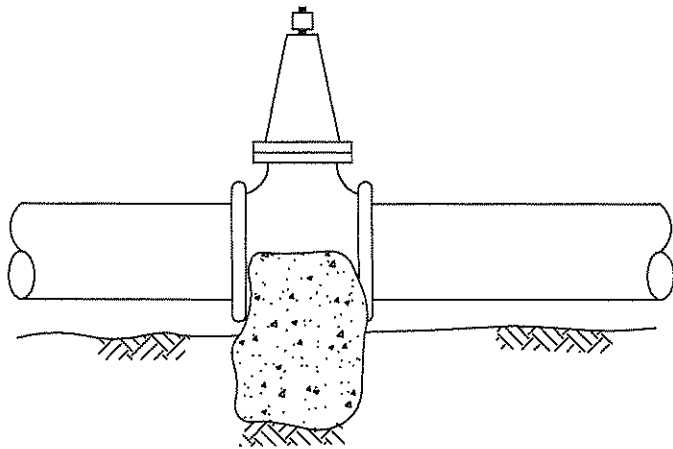


FIG. 2
ELEV. VIEW

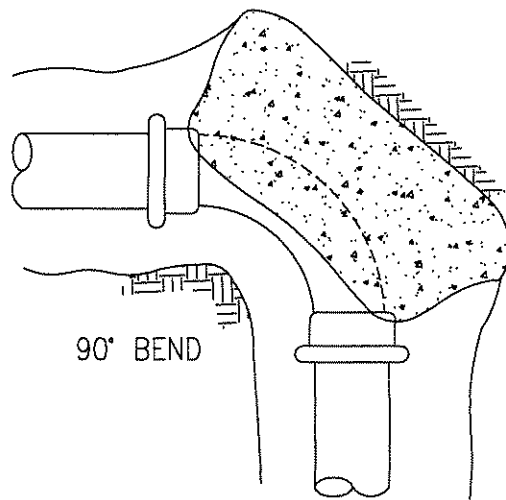


FIG. 3
PLAN VIEW

MIN. 12" FROM FITTING TO BEARING WALL
BEARING WALL

10 MIL PLASTIC AT ALL FITTING IN
CONTACT WITH CONCRETE

WHEN HOT TAPPING USE FIG. 1 AND
FIG. 2

NOTE:
SPECIAL DESIGN REQUIRED FOR BEARING
AREAS FOR CLASS OF PIPE HIGHER
THAN 150.

TECH. SPEC. REFERENCE
CONCRETE THRUST BLOCKS, CRADLES,
ENCASEMENTS AND BLANKETS -
SECTION 10.0

SIZE OF PIPE	BEARING AREA-SQ. FEET		VOL.-CUBIC FEET
	CLASS 150		CLASS 150
	FIG. 1	FIG. 3	FIG. 2
4"	3	3	AS DIRECTED BY ENGINEER
6"	5	6	
8"	8	10	
10"	12	16	
12"	17	22	

OFFICE OF SPECIAL DISTRICTS COUNTY OF SAN BERNARDINO	
THRUST BLOCKS	
APPROVAL	DRAWING NUMBER
Gary Martin	3-1-72
DISTRICT ENGINEER	DATE
REVISD	SHEET 1
	H-3A

2-1/2" DIAMETER RODS OR STRAPS
WITH 2 NUTS ON EACH END.

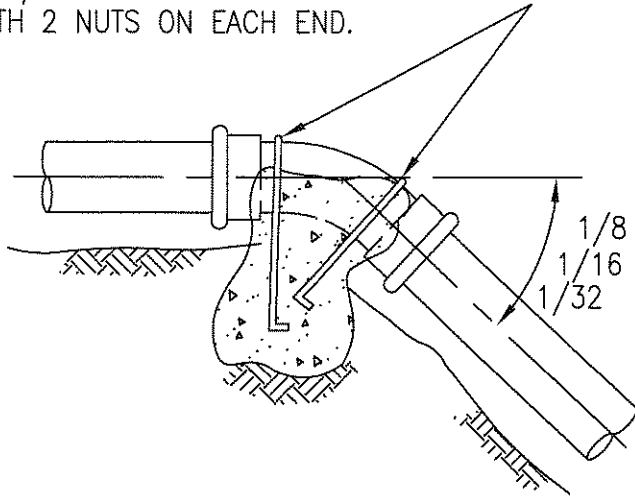


FIG. 4
ELEV. VIEW

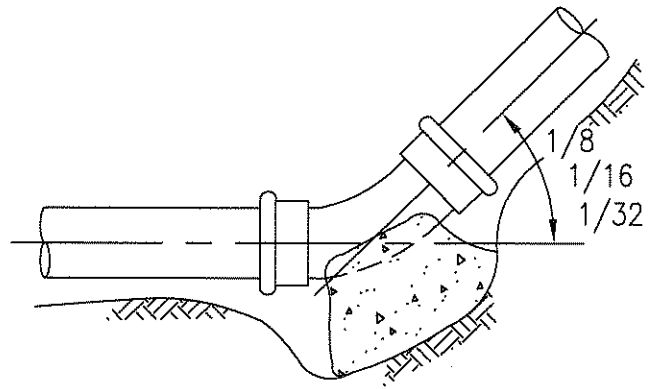


FIG. 5
ELEV. VIEW

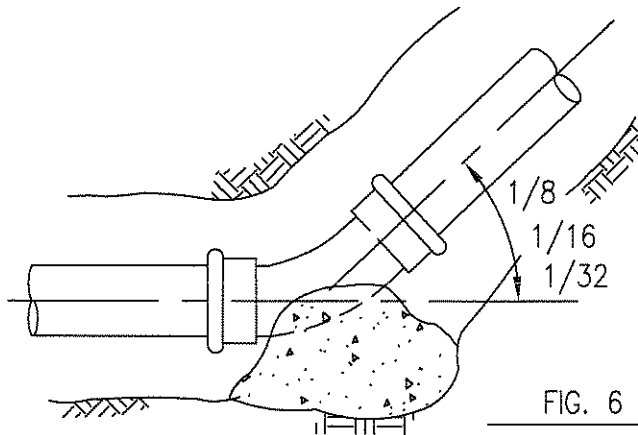


FIG. 6
PLAN VIEW

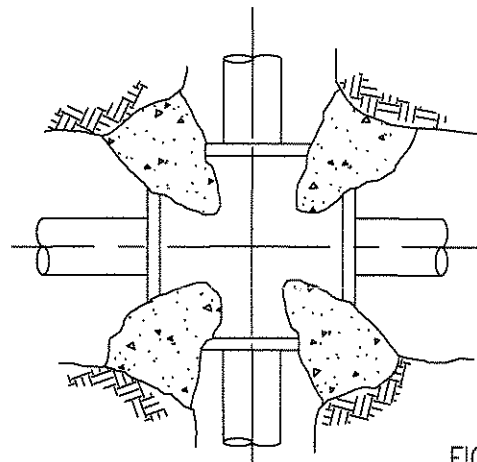


FIG. 7
PLAN VIEW

SIZE OF PIPE	VOLUME - CUBIC FEET			BEARING AREA - SQ. FEET					
	CLASS 150			CLASS 150					
	FIG. 4			FIG. 5			FIG. 6		
	1/8	1/16	1/32	1/8	1/16	1/32	1/8	1/16	1/32
4"	8	3	3	2	1	0	2	1	0
6"	22	5	3	4	2	1	4	2	1
8"		14	3	6	3	1	6	3	1
10"		29	3	9	5	2	9	5	2
12"			6	13	7	3	13	7	3

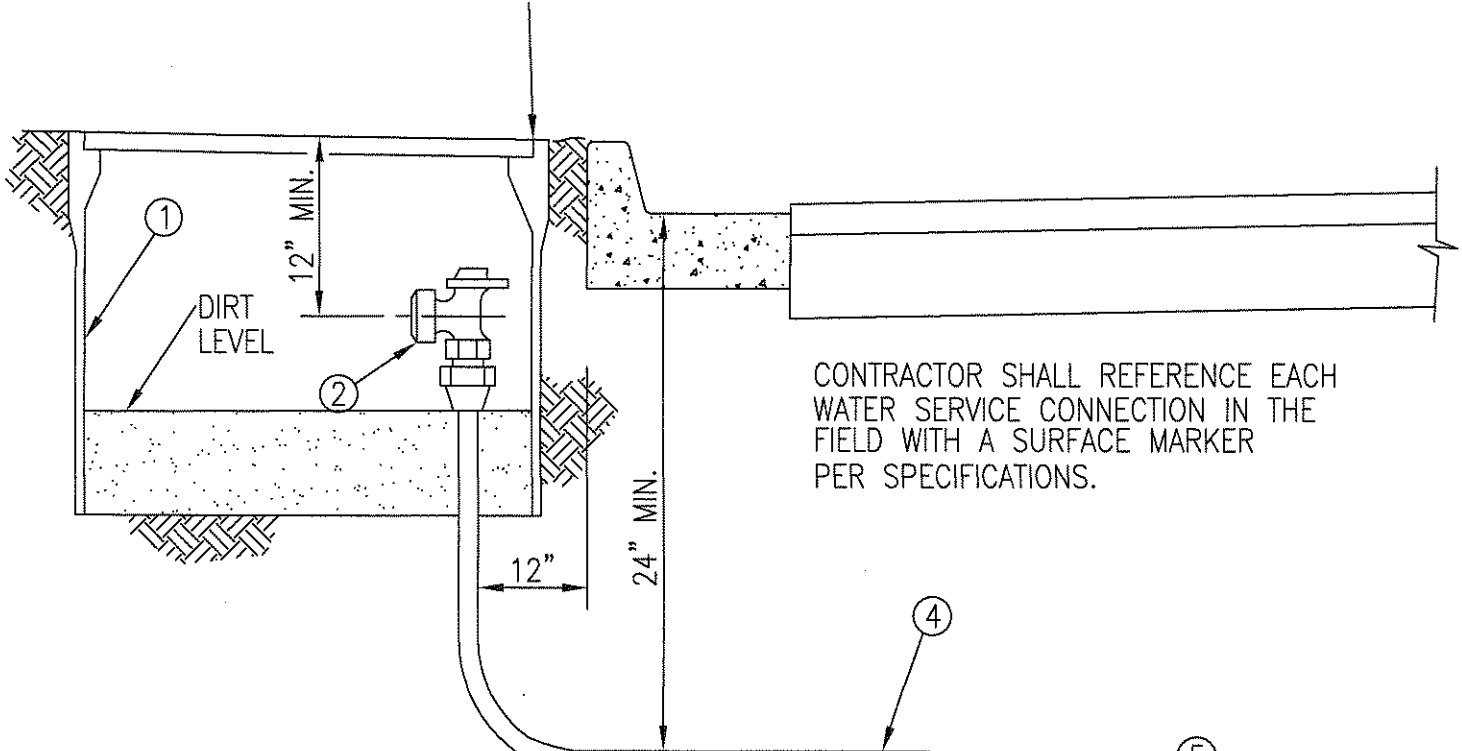
NOTE:
SPECIAL DESIGN REQUIRED FOR
BEARING AREAS FOR CLASS OF
PIPE HIGHER THAN 150.

TECH. SPEC. REFERENCE

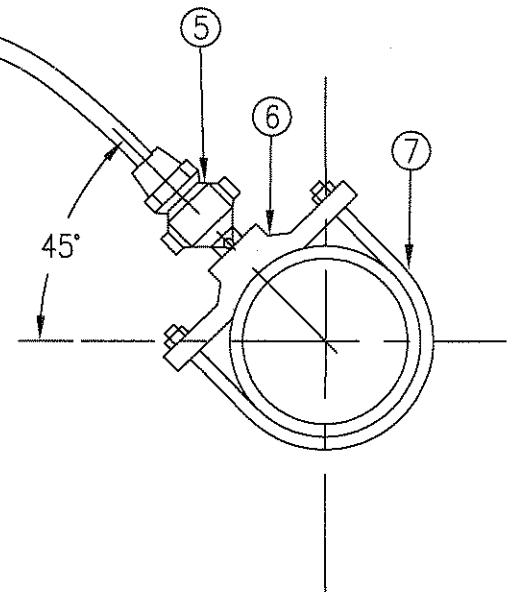
CONCRETE THRUST BLOCKS, AND BLANKETS-
SECTION 10.0

	OFFICE OF SPECIAL DISTRICTS COUNTY OF SAN BERNARDINO	
	THRUST BLOCKS	
	APPROVAL	DRAWING NUMBER
	Gary Martin DISTRICT ENGINEER	3/1/72 DATE
REVISED		H-3B

METER BOX TO SET 1" ABOVE
GROUND LEVEL IF NOT IN CONCRETE
SIDEWALKS



CONTRACTOR SHALL REFERENCE EACH
WATER SERVICE CONNECTION IN THE
FIELD WITH A SURFACE MARKER
PER SPECIFICATIONS.



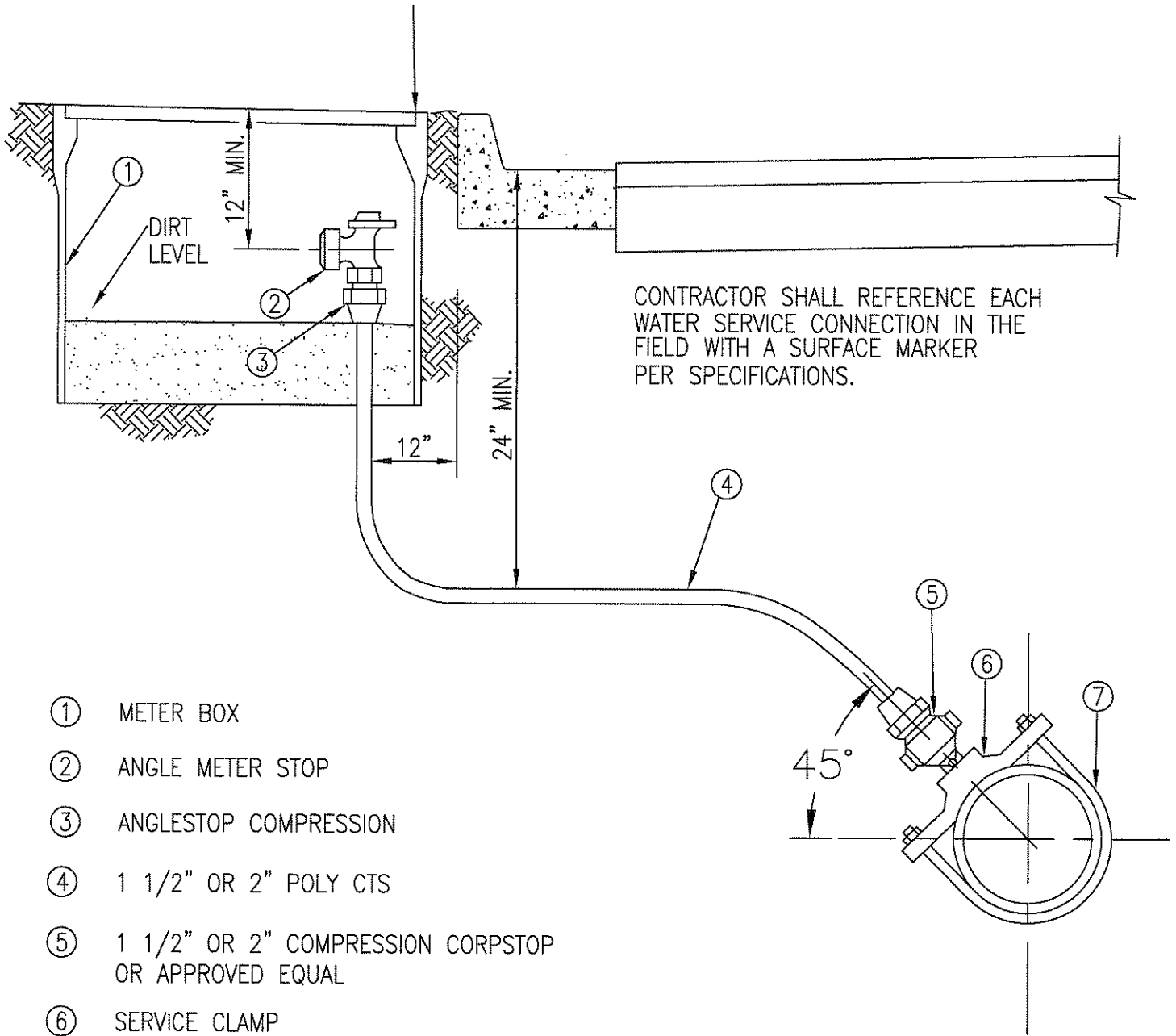
- ① METER BOX
- ② ANGLE METER STOP
- ③ 1" ANGLESTOP COMPRESSION
- ④ 1" CTS POLY
- ⑤ 1" COMPRESSION CORPSTOP OR APPROVED EQUAL
- ⑥ SERVICE CLAMP
- ⑦ MUELLER BRIB BRASS SADDLE WITH STAINLESS STEEL STRAPS OR APPROVED EQUAL

NOTE: ALL SERVICES TO BE
SET 3' OFF R/W UNLESS
APPROVED OTHERWISE.

TECH. SPEC. REFERENCE
WATER SERVICES - SECTION 7.0

	OFFICE OF SPECIAL DISTRICTS COUNTY OF SAN BERNARDINO	
	1" SINGLE SERVICE CONNECTION	
	APPROVAL	DRAWING NUMBER
	Gary Martin	8-02-86
	DISTRICT ENGINEER	DATE
		H-4A
REVISED		

METER BOX TO SET 1" ABOVE
GROUND LEVEL IF NOT IN CONCRETE
SIDEWALKS



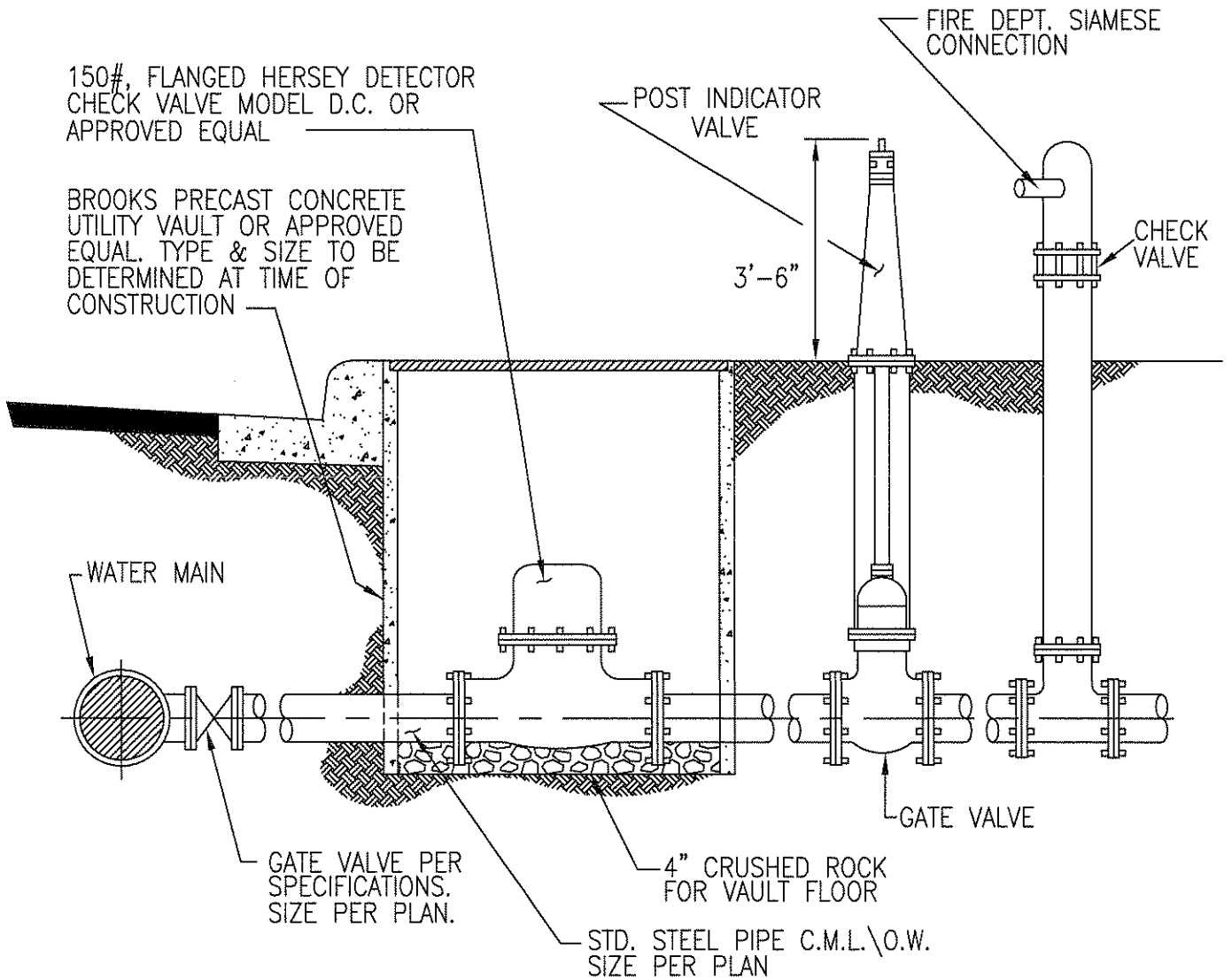
- ① METER BOX
- ② ANGLE METER STOP
- ③ ANGLESTOP COMPRESSION
- ④ 1 1/2" OR 2" POLY CTS
- ⑤ 1 1/2" OR 2" COMPRESSION CORPSTOP OR APPROVED EQUAL
- ⑥ SERVICE CLAMP
- ⑦ MUELLER BRIB BRASS SADDLE WITH STAINLESS STEEL STRAPS OR APPROVED EQUAL

NOTE: ALL SERVICES TO BE SET 3' OFF R/W UNLESS APPROVED OTHERWISE.

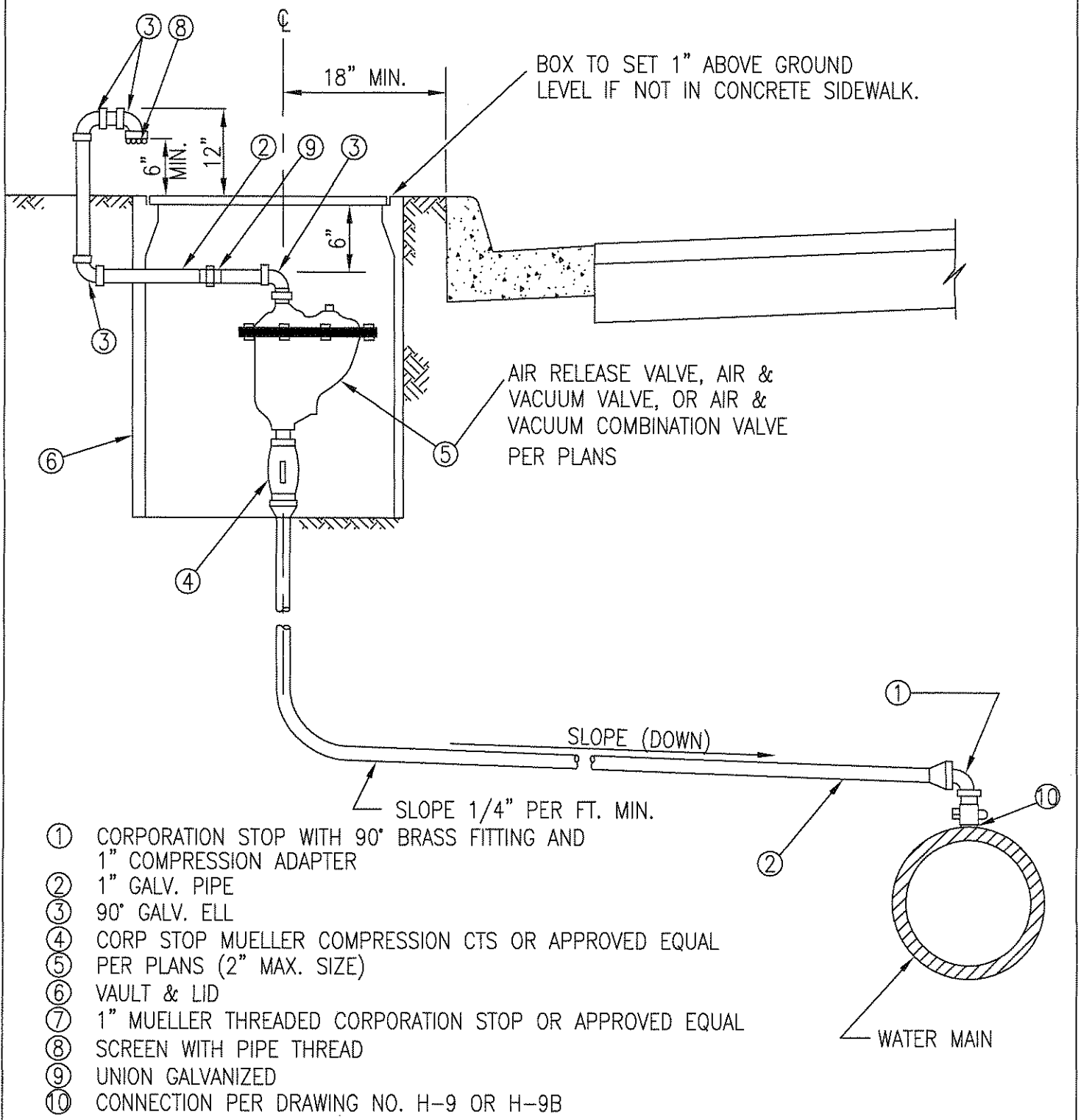
TECH. SPEC. REFERENCE
WATER SERVICES - SECTION 7.0

	OFFICE OF SPECIAL DISTRICTS COUNTY OF SAN BERNARDINO	
	1 1/2" OR 2" SINGLE SERVICE CONNECTION	
	APPROVAL	DRAWING NUMBER
	Gary Martin DISTRICT ENGINEER	8-02-86 DATE
REVISED		H-4B

NOTE: VAULT LOCATION AS FOLLOWS:
 A. STANDARD CURB AS SHOWN
 B. SIDEWALK ADJACENT TO CURB OR ROLLED CURB WITH SIDEWALK ADJACENT - VAULT BEHIND SIDEWALK.



	OFFICE OF SPECIAL DISTRICTS COUNTY OF SAN BERNARDINO	
	FIRE DETECTOR CHECK VALVE ASSEMBLY	
	APPROVAL	DRAWING NUMBER
	Gary Martin	8-02-86
	DISTRICT ENGINEER	DATE
		H-5

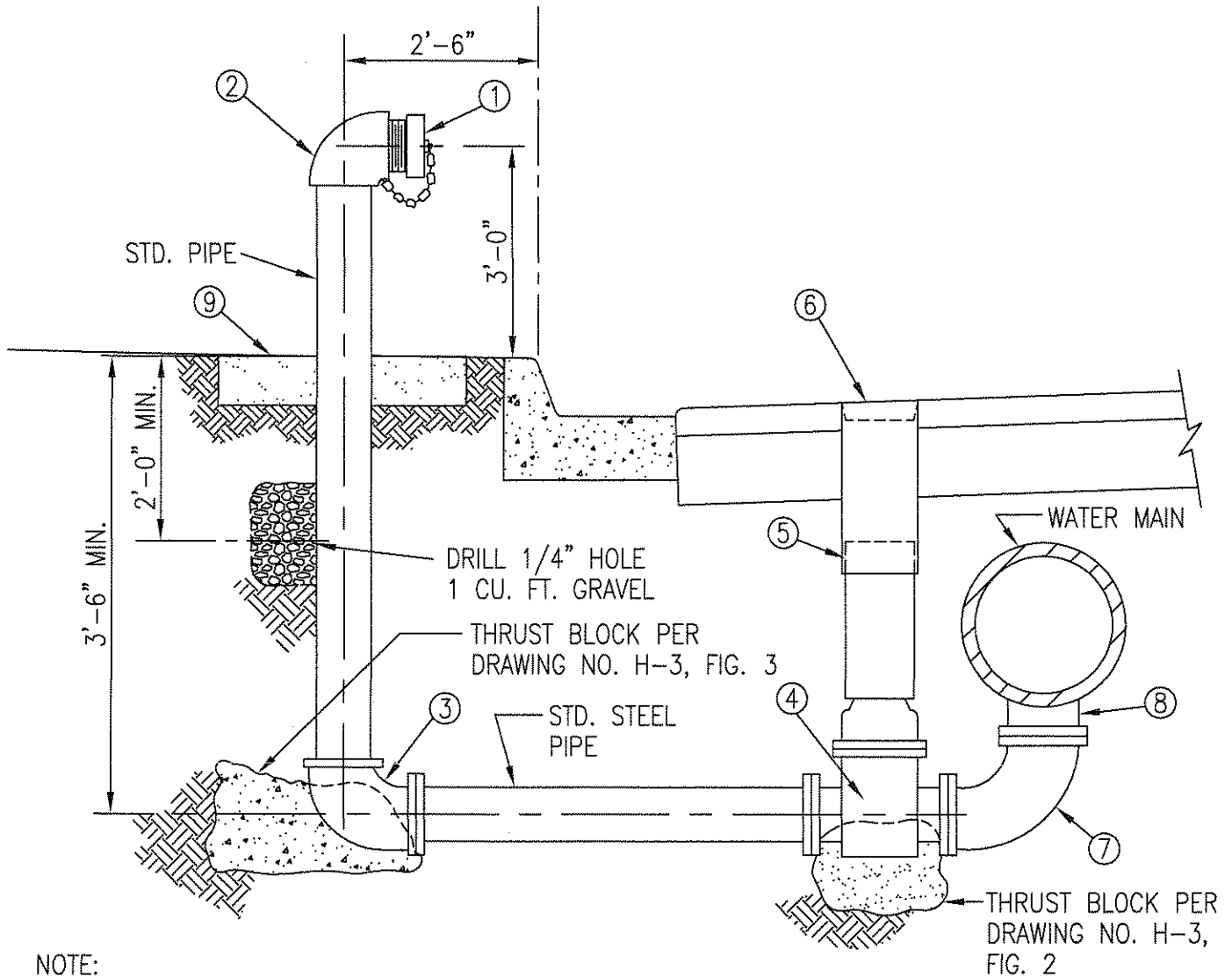


- ① CORPORATION STOP WITH 90° BRASS FITTING AND 1" COMPRESSION ADAPTER
- ② 1" GALV. PIPE
- ③ 90° GALV. ELL
- ④ CORP STOP MUELLER COMPRESSION CTS OR APPROVED EQUAL
- ⑤ PER PLANS (2" MAX. SIZE)
- ⑥ VAULT & LID
- ⑦ 1" MUELLER THREADED CORPORATION STOP OR APPROVED EQUAL
- ⑧ SCREEN WITH PIPE THREAD
- ⑨ UNION GALVANIZED
- ⑩ CONNECTION PER DRAWING NO. H-9 OR H-9B

NOTE:
 SIZE OF PIPE, FITTINGS, &
 VALVES SHALL CONFORM TO
 THE SIZE OF THE AIR AND
 VACUUM VALVE.

TECH. SPEC. REFERENCE
 AIR & VACUUM & AIR RELEASE
 ASSEMBLIES- SECTION 8.0

OFFICE OF SPECIAL DISTRICTS COUNTY OF SAN BERNARDINO	
AIR AND VACUUM VALVE ASSEMBLY	
APPROVAL	DRAWING NUMBER
Gary Martin DISTRICT ENGINEER	H-6
8-02-86 DATE	
REVISED	



NOTE:

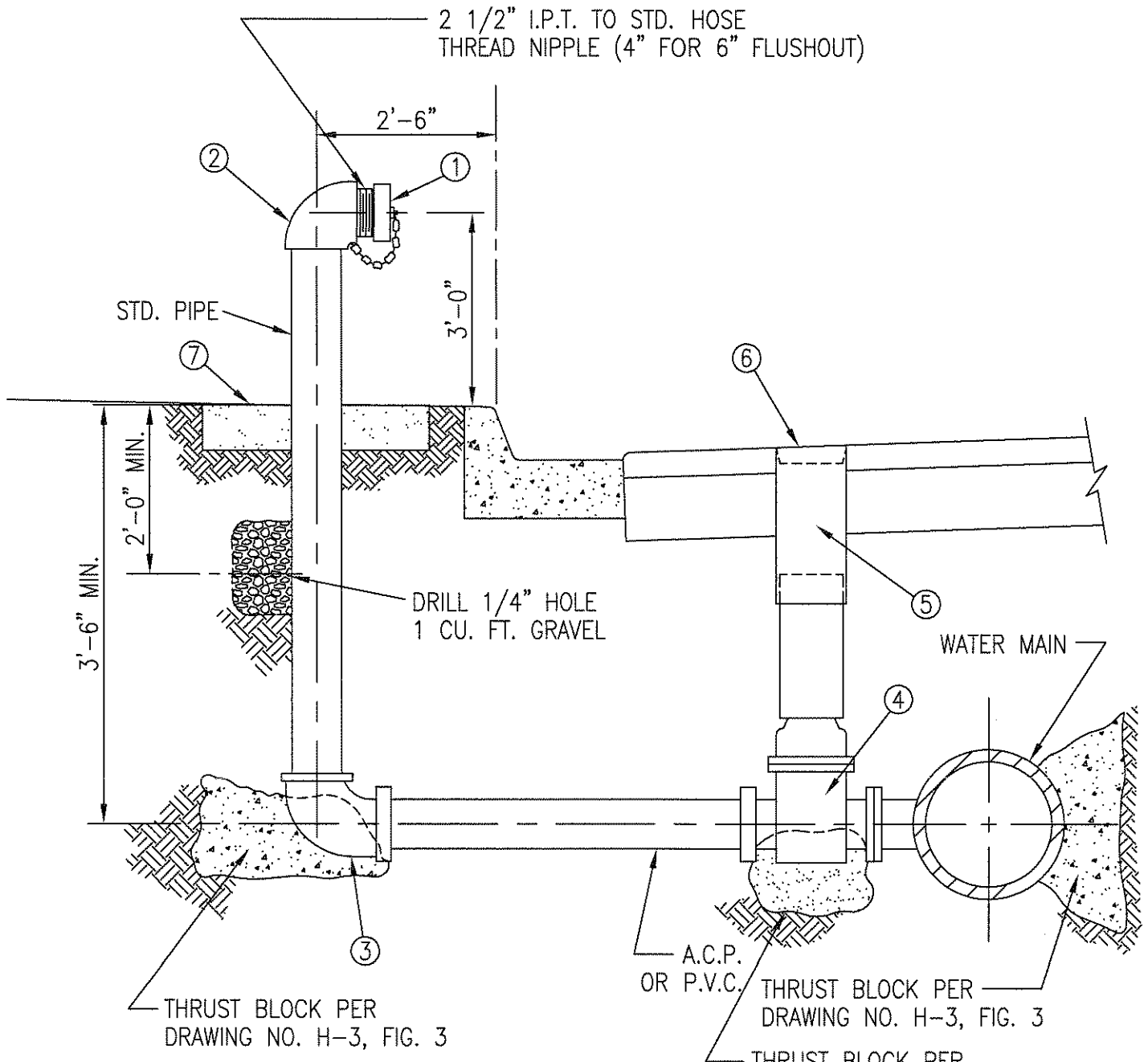
1. 6" BLOWOFF WILL BE REQUIRED FOR 10", 12" AND 14" DIAMETER WATER MAINS.
2. THE MIN. INSIDE DIAMETER OF ALL PIPE, VALVES AND FITTINGS ON ANY BLOWOFF SHALL BE EITHER 4" OR 6".

- ① BRASS THREADED REDUCER AND CAP WITH CHAIN
- ② SCR. ELL.
- ③ FLGxMJ ELBOW WITH RESTRAINTS
- ④ GATE VALVE—FIG. x R.T. MUELLER RESILIENT SEAT
- ⑤ VALVE BOX PER DRAWING H-11
- ⑥ 6"x18" GALVANIZED SLIP CAN
- ⑦ FLG. x MJ ELBOW WITH RESTRAINTS
- ⑧ TEE
- ⑨ 3'x3'x6" NON SLIP CONCRETE PAD

TECH. SPEC. REFERENCE

FLUSHOUT AND BLOWOFF
ASSEMBLIES—SECTION 5.0

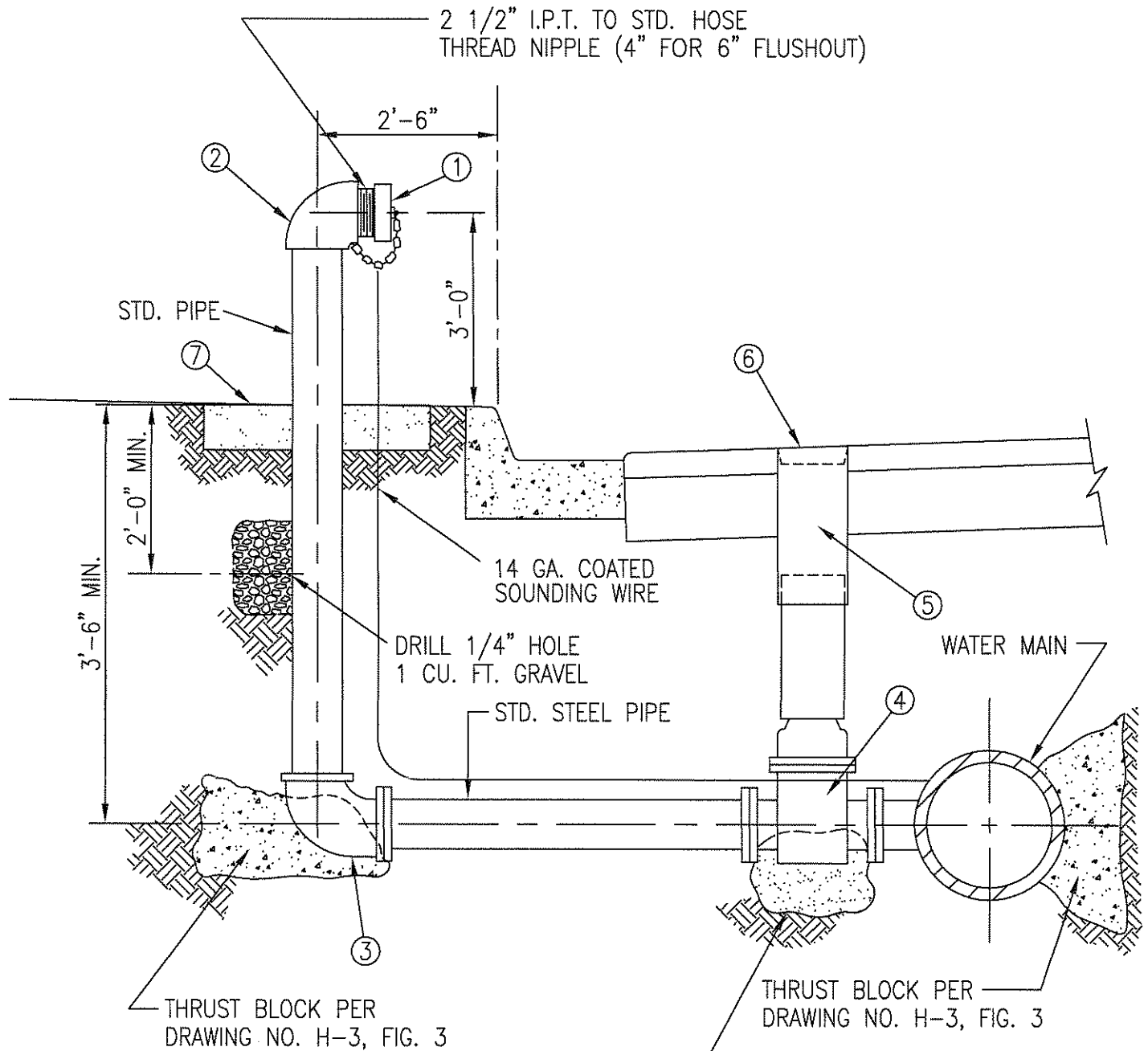
	OFFICE OF SPECIAL DISTRICTS COUNTY OF SAN BERNARDINO	
	4" & 6" BLOWOFF ASSEMBLY STEEL MAIN	
	APPROVAL	DRAWING NUMBER
	Gary Martin	8-02-86
	DISTRICT ENGINEER	DATE
REVISED		H-7B



- ① HOSE CAP WITH CHAIN.
- ② RED ELL
- ③ C.I. ELL SCR. x R.T.
- ④ GATE VALVE FLG.x R.T.
- ⑤ VALVE BOX PER DRAWING H-11
- ⑥ VALVE BOX COVER.
- ⑦ 3'X3'X6" NON SLIP CONCRETE PAD

TECH. SPEC. REFERENCE
 FLUSHOUT AND BLOWOFF
 ASSEMBLIES-SECTION 5.0

	OFFICE OF SPECIAL DISTRICTS COUNTY OF SAN BERNARDINO	
	4" & 6" FLUSHOUT ASSEMBLY A.C. & P.V.C. MAINS	
	APPROVAL	DRAWING NUMBER
	Gary Martin	H-8A
	DISTRICT ENGINEER	8-02-86 DATE
REVISED		



- ① HOSE CAP WITH CHAIN.
- ② RED ELL
- ③ C.I. ELL SCR. x FLG.
- ④ GATE VALVE FLG.
- ⑤ VALVE BOX PER DRAWING H-11
- ⑥ VALVE BOX COVER.
- ⑦ 3'x3'x6" NON SLIP
CONCRETE PAD

TECH. SPEC. REFERENCE

FLUSHOUT AND BLOWOFF
ASSEMBLIES-SECTION 5.0

	OFFICE OF SPECIAL DISTRICTS COUNTY OF SAN BERNARDINO	
	4" & 6" FLUSHOUT ASSEMBLY STEEL MAIN	
	APPROVAL	DRAWING NUMBER
	Gary Martin	8-02-86
	DISTRICT ENGINEER	DATE
REVISED		H-8B

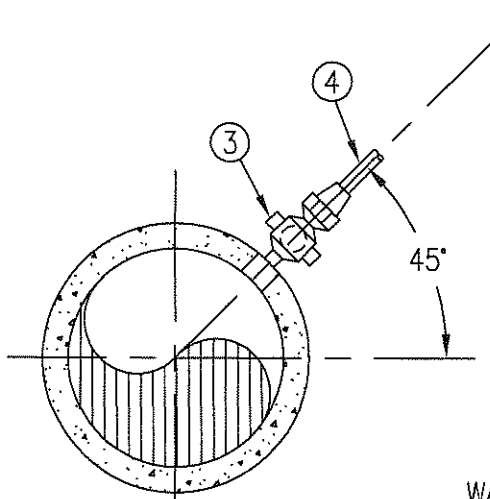


FIGURE A (A.C. MAIN)

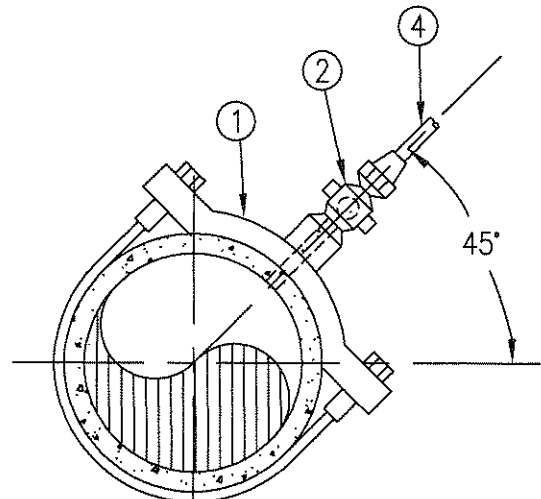


FIGURE B (A.C., P.V.C., STEEL MAIN)

- ① SERVICE CLAMP
- ② CORPORATION STOP, (I.P.T.) INLET
- ③ CORPORATION STOP, C.S.T. INLET
- ④ SERVICE TUBING

CONNECTION REQUIREMENTS

SERVICE OUTLET	SIZE OF A.C. MAIN			
	4"	6"	8"	10" & OVER
1"	FIG. B	FIG. B	FIG. B	FIG. A
1 1/4"	NOT PERMITTED	FIG. B	FIG. B	FIG. B
1 1/2"	NOT PERMITTED	FIG. B	FIG. B	FIG. B
2"	NOT PERMITTED	NOT PERMITTED	FIG. B	FIG. B

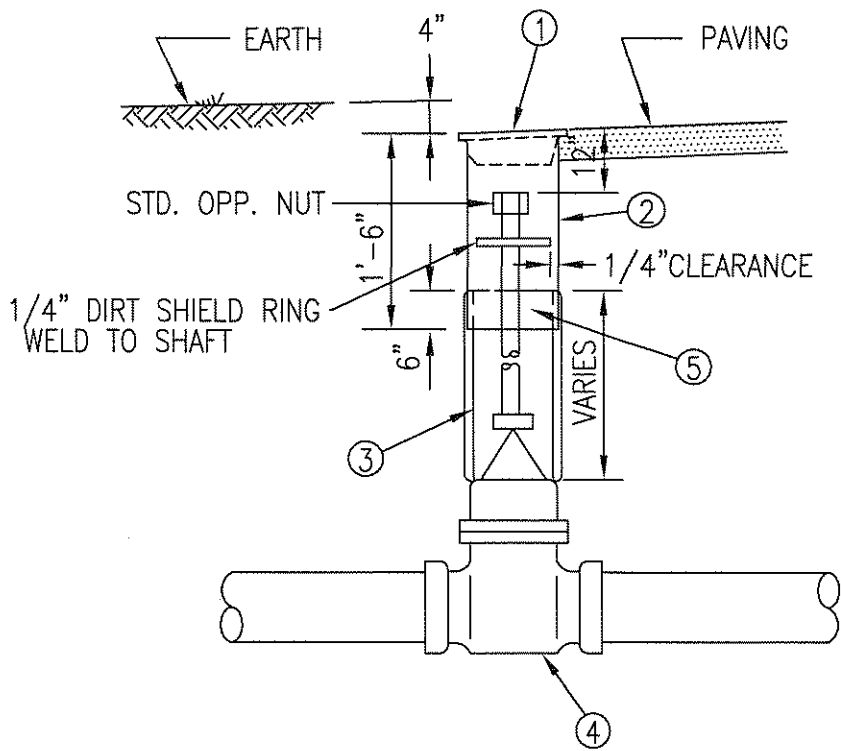
NOTES:

1. IF TWO TAPS ARE MADE, ONE ON EACH SIDE OF THE MAIN, THEY SHALL BE SEPARATED BY A MINIMUM OF TWO (2) FEET (MEASURED ALONG THE PIPE LENGTH). MAKE TAP A MINIMUM OF TWO (2) FEET FROM THE END OF THE PIPE.

2. PIPE THREADS SHALL BE CLEAN AND SHARP AND SEALED WITH AN APPROVED JOINT COMPOUND.

TECH. SPEC. REFERENCE
WATER SERVICES - SECTION 7.0

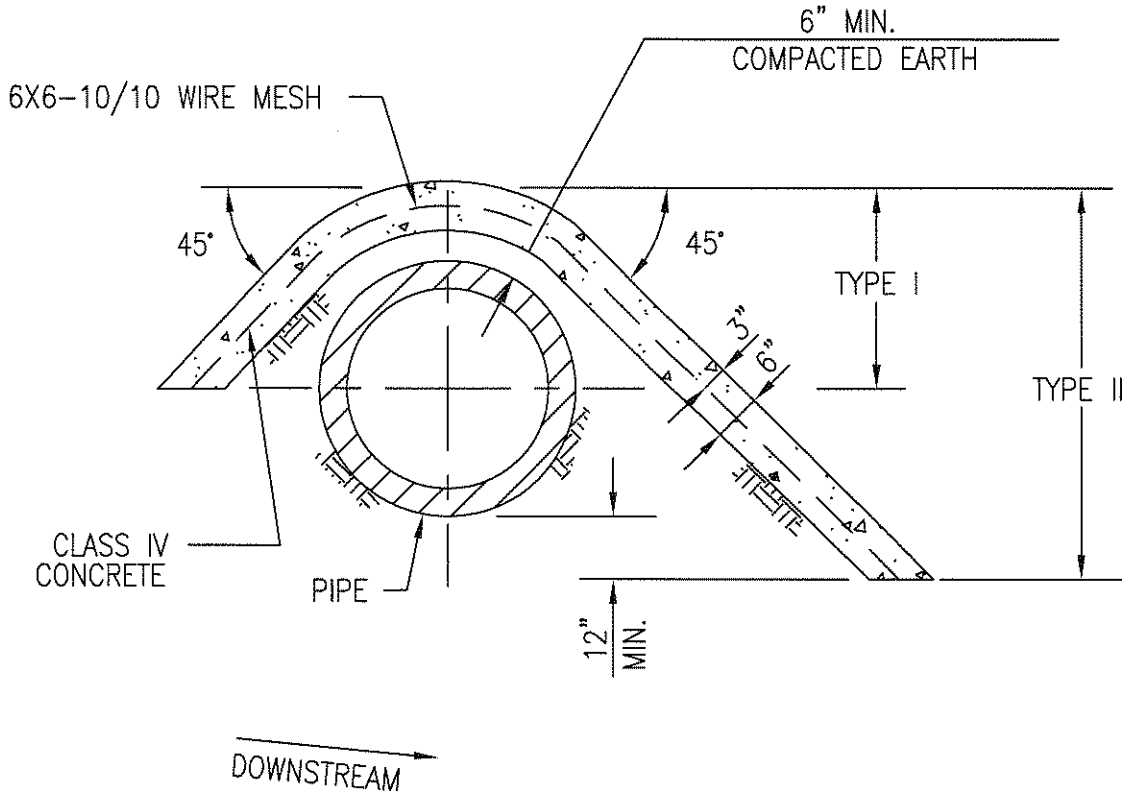
	OFFICE OF SPECIAL DISTRICTS COUNTY OF SAN BERNARDINO	
	SERVICE CONNECTIONS TO WATER MAINS	
	APPROVAL	DRAWING NUMBER
	Gary Martin	8-02-86
	DISTRICT ENGINEER	DATE
REVISED		H-9



- ① VALVE BOX COVER
- ② 6 5/8" O.D., 10 GA. STEEL VALVE BOX TOP. (SLIDER INSTALLS INSIDE SDR 35)
- ③ 6" SDR 35 PIPE. CUT TO LENGTH TO MEET FIELD CONDITIONS
- ④ VALVE
- ⑤ FABRICATED EXTENSION STEM (REQUIRED IF VALVE NUT MORE THAN 36" BELOW SURFACE).

TECH. SPEC. REFERENCE
 GATE VALVES, VALVE BOXES
 AND COVERS—SECTION 6.0

	OFFICE OF SPECIAL DISTRICTS COUNTY OF SAN BERNARDINO	
	VALVE BOX	
	APPROVAL <u>Gary Martin</u> DISTRICT ENGINEER	8-02-86 DATE
		DRAWING NUMBER H-11
REVISED		



NOTES:

1. THE DOWNSTREAM TOE OF TYPE I CONCRETE BLANKET ENDS AT THE CENTER OF PIPE AS SHOWN ABOVE.
2. THE DOWNSTREAM TOE OF TYPE II CONCRETE BLANKET ENDS 12" BELOW THE BOTTOM OF PIPE AS SHOWN ABOVE.

TECH. SPEC. REFERENCE:
CONCRETE-SECTION 2.0
CONC. BLANKET-SECTION 10.0

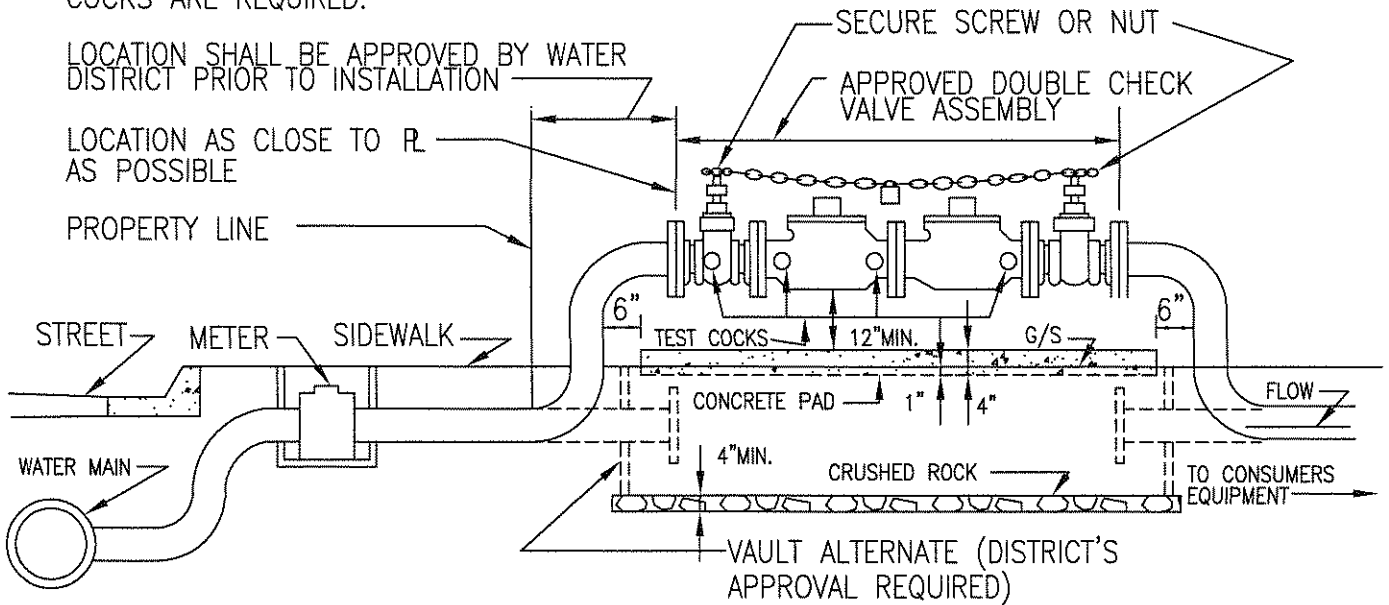
	OFFICE OF SPECIAL DISTRICTS COUNTY OF SAN BERNARDINO	
	CONCRETE BLANKET	
	APPROVAL	DRAWING NUMBER
	Gary Martin DISTRICT ENGINEER	3/1/72 DATE
		H-12
REVISED		

NOTE:
 PLACE BOTTOM OF VALVE 12" OR MORE ABOVE FINISHED GRADE & SURROUNDING
 GROUND OR IN A VAULT PER DISTRICTS REQUIREMENTS. GATE VALVES AND TEST
 COCKS ARE REQUIRED.

LOCATION SHALL BE APPROVED BY WATER
 DISTRICT PRIOR TO INSTALLATION

LOCATION AS CLOSE TO R.
 AS POSSIBLE

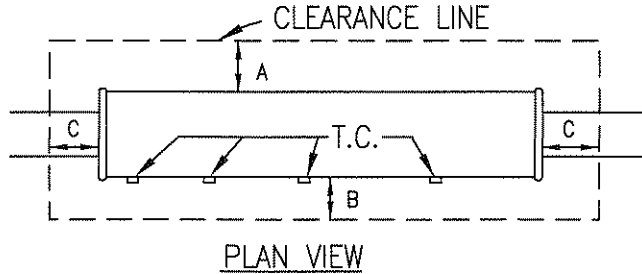
PROPERTY LINE



DISTRICT WATER SUPPLY - NO CONNECTIONS OR TEES BETWEEN METER & DEVICE

MIN. CLEARANCE
 (ABOVE OR BELOW G.S.)

SIZE	A	B	C
1"-3"	6"	18"	6"
4"-& UP	24"	24"	6"



NOTES:

- 1) THE "APPROVED" DOUBLE CHECK VALVE ASSEMBLY SHALL BE LOCATED AND
 INSTALLED SUBJECT TO THE APPROVAL OF THE DISTRICT ENGINEER.
- 2) A PRESSURE RELIEF VALVE SHALL BE INSTALLED PER SECTION 1007
 UNIFORM PLUMBING CODE.
- 3) THE DEVICE MUST BE INSPECTED AND TESTED IMMEDIATELY AFTER
 INSTALLATION.
- 4) IF DEVICE IS INSTALLED IN A VAULT, BOTTOM OF DEVICE SHALL BE A
 MIN. OF 12" FROM TOP OF CRUSHED ROCK.

OFFICE OF SPECIAL DISTRICTS COUNTY OF SAN BERNARDINO	
DOUBLE CHECK VALVE ASSEMBLY	
APPROVAL	DRAWING NUMBER
Gary Martin	H-13
DISTRICT ENGINEER	DATE
	8-02-86

NOTE:
 PLACE BOTTOM OF VALVE 12" OR MORE ABOVE FINISHED GRADE & SURROUNDING GROUND. GATE VALVES AND TEST CLOCKS ARE REQUIRED.

LOCATION SHALL BE APPROVED BY WATER DISTRICT PRIOR TO INSTALLATION

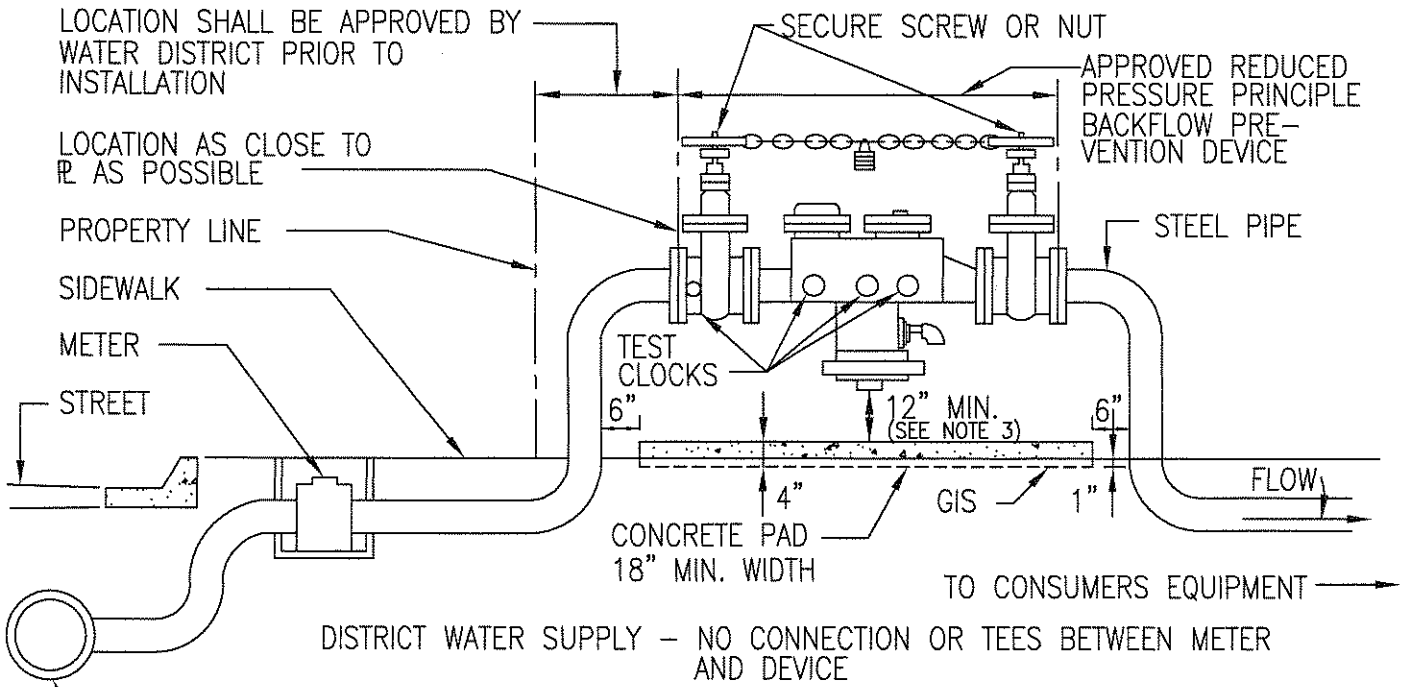
LOCATION AS CLOSE TO R AS POSSIBLE

PROPERTY LINE

SIDEWALK

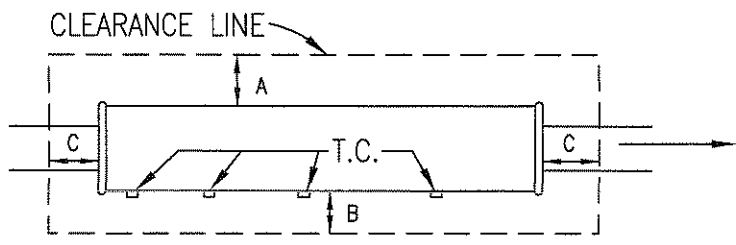
METER

STREET



DISTRICT WATER SUPPLY - NO CONNECTION OR TEES BETWEEN METER AND DEVICE

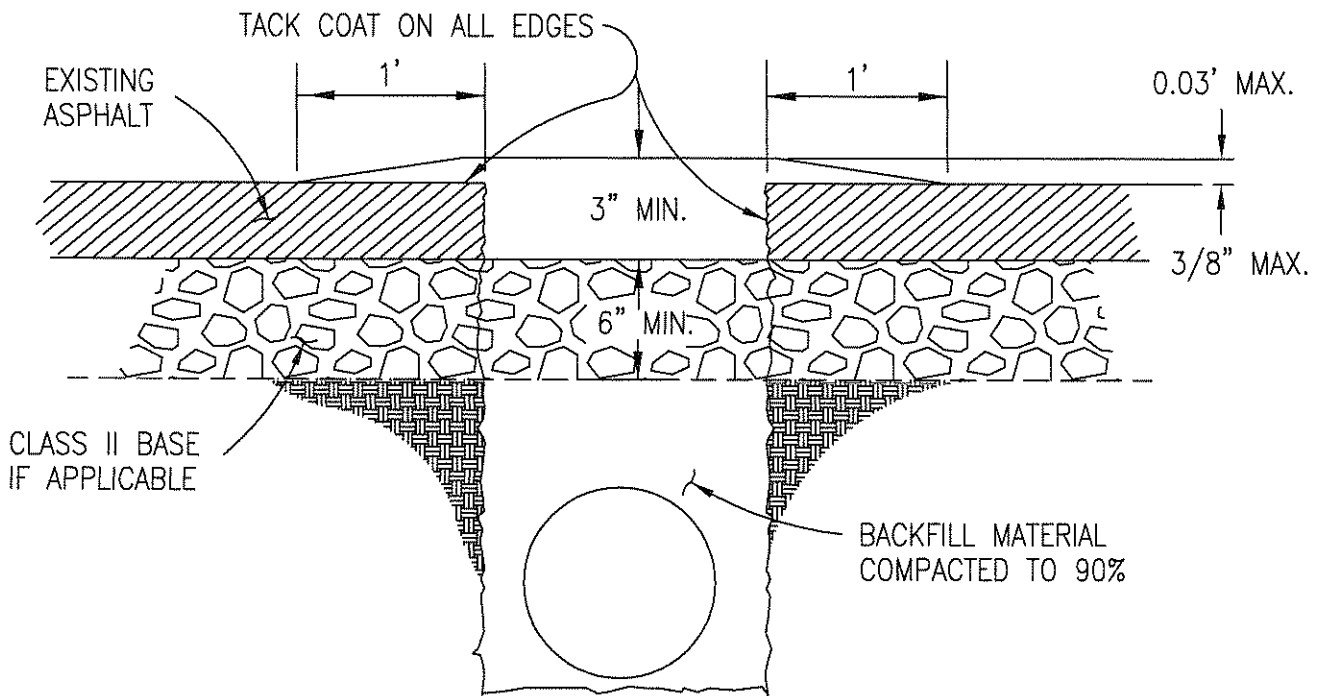
MIN. CLEARANCE			
SIZE	A	B	C
1"-3"	12"	18"	12"
4"-& UP	24"	24"	12"



NOTES:

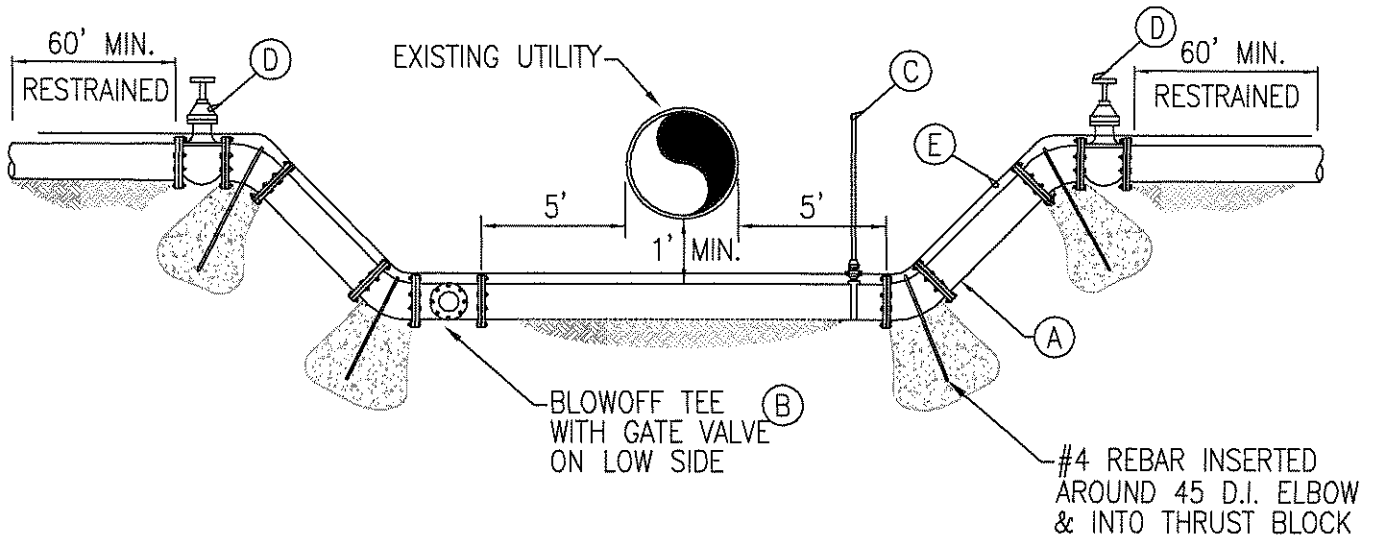
- 1) THE "APPROVED" REDUCED PRESSURE PRINCIPLE BACKFLOW PREVENTION DEVICE SHALL BE LOCATED AND INSTALLED SUBJECT TO THE APPROVAL OF THE DISTRICT ENGINEER.
- 2) THE DEVICE MUST BE INSPECTED & TESTED IMMEDIATELY AFTER INSTALLATION.
- 3) BOTTOM OF DEVICE SHALL BE INSTALLED A MINIMUM OF 1" ABOVE TOP OF PLANTER WALLS IF INSTALLED WITHIN A RAISED PLANTER.

	OFFICE OF SPECIAL DISTRICTS COUNTY OF SAN BERNARDINO	
	REDUCED PRESSURE PRINCIPLE BACKFLOW DEVICE	
	APPROVAL	DRAWING NUMBER
	Gary Martin DISTRICT ENGINEER	8-02-86 DATE
		H-14



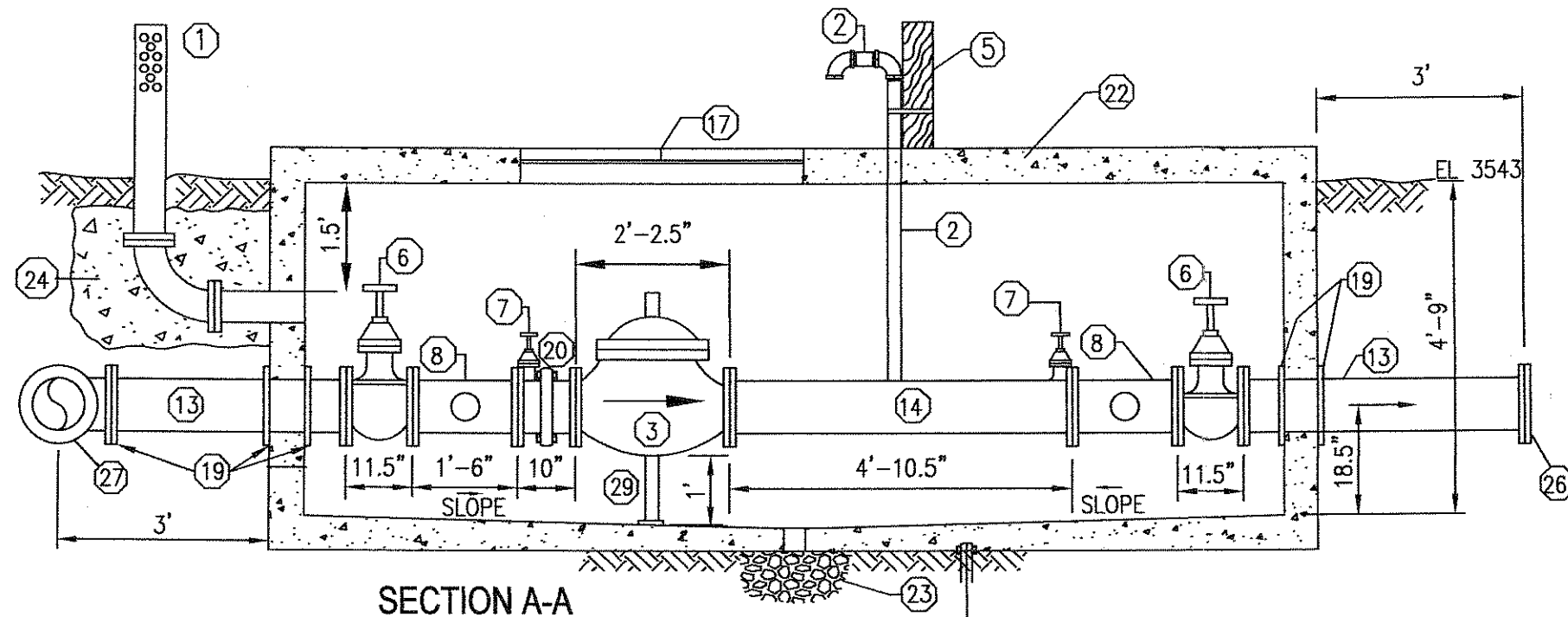
TECH. SPEC. REFERENCE
EARTHWORK -- SECTION 1.0

	SPECIAL DISTRICTS DIVISION COUNTY OF SAN BERNARDINO	
	TRENCH REPAIR IN ROADWAYS	
	APPROVAL	DRAWING NUMBER
	Gary Martin	8-02-86
	DISTRICT ENGINEER	DATE
		H-15

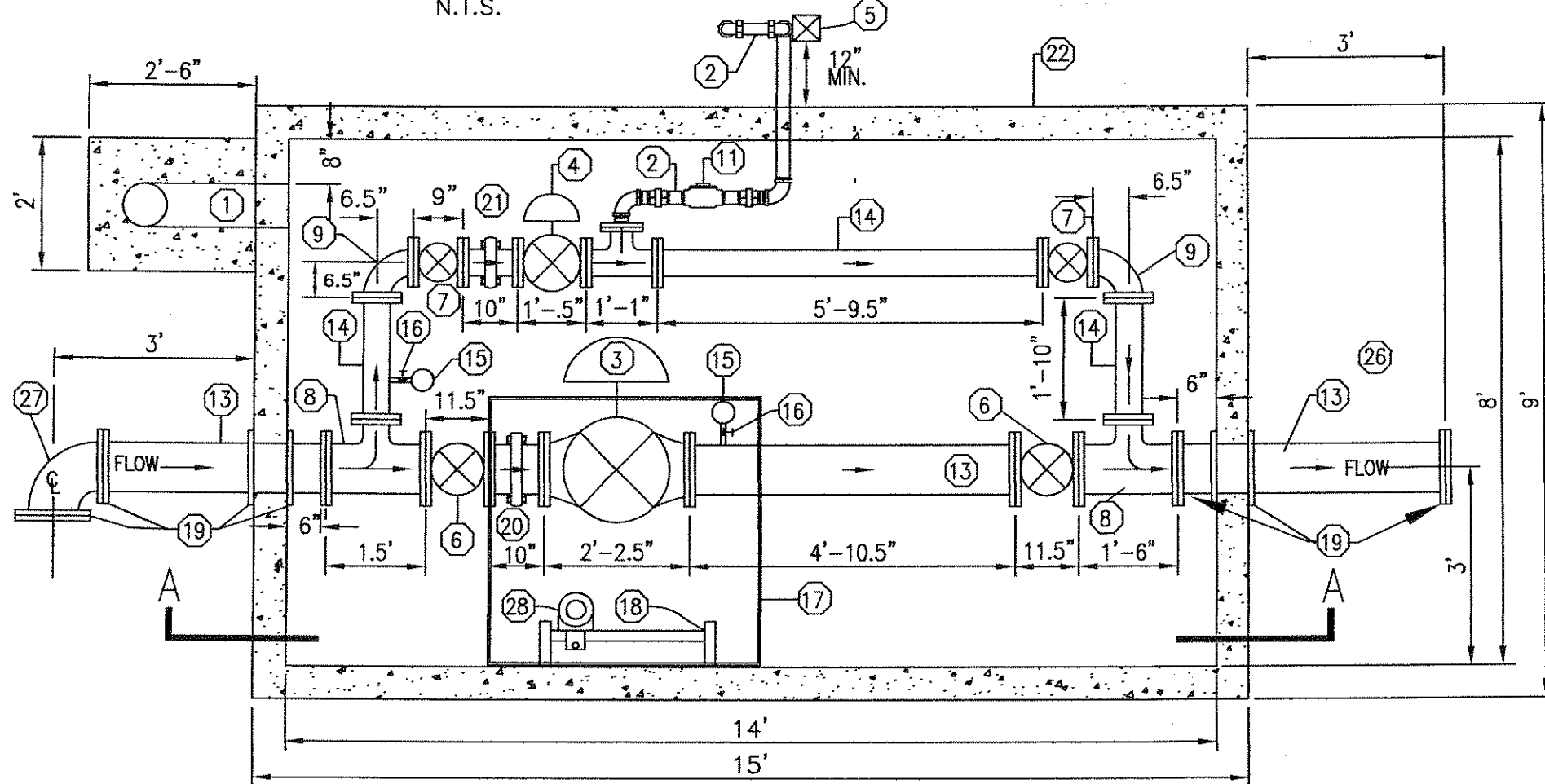


- (A) THE DROP SECTION SHALL BE CLASS 50 - 55 D.I. PIPE WITH FLG. OR M.J. FITTINGS.
- (B) BLOWOFF ASSEMBLY TO BE INSTALLED ON LOW SIDE. SEE BLOWOFF DETAIL H-7B
- (C) AIR/VAC ASSEMBLY TO BE INSTALLED ON HIGH SIDE. SEE AIR / VAC DETAIL H-6
- (D) ISOLATION VALVES TO BE DETERMINED BY DISTRICT BASED ON LOCATION OF OTHER LINE VALVES.
- (E) 12 GA LOCATION WIRE

	OFFICE OF SPECIAL DISTRICTS COUNTY OF SAN BERNARDINO	
	WATER MAIN DROP SECTION DETAIL	
	APPROVAL	DRAWING
	Gary Martin	8-02-86
	DISTRICT ENGINEER	DATE
		H-17
REVISED		



SECTION A-A
N.T.S.



PLAN VIEW
N.T.S.

- ① 6" GALV. FLG. AIR VENT ALHAMBRA FOUNDRY # A-2153
- ② 2" GALV. STEEL RELIEF DRAIN LINE
- ③ 8" FLANGED PRESSURE REDUCER VALVE, CLA-VAL
CLA-VAL 90-01-GG-ABCDS WITH X42 "Y" STRAINER
- ④ 4" FLANGED PRESSURE REDUCER VALVE, CLA-VAL
90-01-GG-ABCDS WITH X42 "Y" STRAINER
- ⑤ 4"x4" REDWOOD POST
- ⑥ 8" FLANGED 150# GATE VALVE
- ⑦ 4" FLANGED 150# GATE VALVE
- ⑧ 8"x 4" FLANGED D.I. 150# RED. TEE
- ⑨ 4" FLANGED D.I. 150# 90 DEG. ELBOW
- ⑩ 4" FLANGED D.I. 150# 90 DEG. ELBOW
- ⑪ 4" CLAY-VALVE 50G-01-ABS
PRESSURE RELIEF VALVE
- ⑫ 2" GALV. IRON PRESS
RELIEF DRAIN LINE
- ⑬ 8" DIA. CLASS 50 D.I. PIPE
- ⑭ 4" DIA. CLASS 50 D.I. PIPE
- ⑮ 6" DIA (0-200) P.S.I. S.S. PRESSURE GAUGE
- ⑯ 316 STAINLESS STEEL ISOLATION BALL VA. FOR PRESSURE GAUGE
- ⑰ 2'x4' GALV. PAD LOCKABLE DOUBLE DOOR,
SPRING ASSISTED HINGED DOORS
- ⑱ GALV. STEEL LADDER BY ALHAMBRA
- ⑲ THRUST BRACE- 8"- D.I. FLANGE ADAPTER SERIES 200
WITH 50 FT-LB TORQUE FOR BOLTS
- ⑳ 8" D.I. AND VICTAULIC FITTING FLEXIBLE SPOOL
- ㉑ 4" D.I. AND VICTAULIC FITTING FLEXIBLE SPOOL
- ㉒ UTILITY VAULT CO. VAULT WITH TRAFFIC RATED DOORS AND LID
- ㉓ 3/4-INCH GRAVEL DRAIN PIT 4'x4'x2' DEEP
- ㉔ 2500 PSI CONCRETE AIR VENT SUPPORT
- ㉕ 8" C-900 CL 150 PVC PIPE
- ㉖ 8" UNI-FLANGE SERIES 900 FLG. ADAPTER FOR PVC PIPE
- ㉗ 8" FLANGED D.I. 150# 90 DEG. ELBOW
- ㉘ DUR-RED SAFETY POST OR EQUAL MOUNTED TO LADDER
- ㉙ ADJUSTABLE PIPE SUPPORT 6 TOTAL

OFFICE OF SPECIAL DISTRICTS COUNTY OF SAN BERNARDINO		
PRESSURE REDUCING STATION		
APPROVAL		DRAWING NUMBER
Gary Martin	8-02-86	H-10
DISTRICT ENGINEER	DATE	
REVISED		