

SAN BERNARDINO COUNTY INITIAL STUDY ENVIRONMENTAL CHECKLIST FORM

This form and the descriptive information in the application package constitute the contents of Initial Study pursuant to County Guidelines under Ordinance 3040 and Section 15063 of the State CEQA Guidelines.

PROJECT LABEL:

APN:	0517-101-33				
Applicant:	County of San Bernardino, Special Districts Dept.	USGS Quad:	Yermo		
Community:	Calico Ghost Town	T, R, Section:	10N	R1E	Sec 22
Location:	On the south side of Ghost Town road, immediately south of the Calico Ghost Town Regional Park parking area, south of existing sewer ponds.	Thomas Bros.:	P 35921 GRID: G-4 & H-4		
Staff:	Gary Martin, Senior Project Manager	Planning Area:	Yermo		
Rep:	County of San Bernardino, Special Districts Dept.	LUZD:	RC		
Proposal:	Improvements to the existing small water system that serves the Calico Ghost Town Regional Park, comprising the construction of a small (package) water treatment plant and associated evaporation ponds.	Overlays:	None		

PROJECT CONTACT INFORMATION:

Lead agency: County of San Bernardino
Special Districts Department
157 West 5th Street, Second Floor
San Bernardino, CA 92415-0450

Contact person: Gary Martin, Senior Project Manager
Phone No: (909) 387-4168 Fax No: (909) 387-2113
E-mail: gmartin@sdd.sbcounty.gov

Project Sponsor: County of San Bernardino
Regional Parks Department
777 E. Rialto Avenue
San Bernardino, CA 92415-0763

ENVIRONMENTAL REVIEW OF THE PROJECT:

The purpose of this Initial Study (IS) is to identify potential environmental impacts associated with the Calico Ghost Town Water System Project and involves Improvements to the existing small water system that serves the Calico Ghost Town Regional Park, which is operated by the Regional Parks Department of the County. This IS has been prepared in accordance with the State of California Environmental Quality Act (CEQA) and the County of San Bernardino CEQA Guidelines.

Pursuant to Section 15367 of the State CEQA Guidelines, the County of San Bernardino ("County") is the Lead Agency in the preparation of this proposed IS. Michael Brandman Associates (MBA) is the environmental consultant to the County. The intended use of this IS is to provide adequate environmental analysis related to project construction and operational activities. This IS will be used by the County of San Bernardino (Lead Agency) in evaluating the potential environmental impacts associated with the Proposed Project.

PROJECT DESCRIPTION:

The proposed project involves improvements to the existing small water system that serves the Calico Ghost Town Regional Park, which is operated by the Regional Parks Department of San Bernardino County. The main components of the current system include two small water wells located south of the Ghost Town and two small reservoirs located at the extreme north end of the Ghost Town. Water from the two wells is pumped up to the reservoirs and is then distributed to the various operations within the Ghost Town. However, due to water quality problems with the well water, it is now necessary to provide for water treatment to remove various contaminants, from the water. In order to address this issue a small reverse osmosis water treatment unit will be installed at a location proximate to and generally south of the existing sewer treatment ponds located south of the park entrance. The raw water from the two wells would then be pumped to the water treatment unit and the treated water would then be pumped to the two existing reservoirs.

Waste brine resulting from the treatment of the water would then drain to evaporation ponds for disposal. These ponds would be at a depth of approximately 6 feet, and will be lined to prevent contaminants from re-entering the water table. If necessary, during winter months waste brine may be pumped out of the ponds for off-site disposal. Exhibits 1 through 3 show the location of the Project. Exhibit 4 shows the Proposed Project improvements and land disturbances related to their construction would be confined to a five-acre area within Government lot 49.

REGULATORY SETTING:

The proposed project will include design features to avoid significant impacts to the environment. Because these design features have been incorporated into the proposed project's design, they are not considered mitigation. Project design features are as follows:

Federal Clean Water Act

The Clean Water Act (CWA), as amended by the Water Quality Act of 1987, is the major federal legislation governing water quality. The objective of the CWA is "to restore and maintain the chemical, physical, and biological integrity of the Nation's waters." Important applicable sections of the CWA to the project are as follows:

- Section 301 prohibits the discharge of any pollutant by any person, except as in compliance with Sections 302, 306, 307, 318, 402, and 404 of the CWA. Sections 303 and 304 provide for water quality standards, criteria, and guidelines.
- Section 401 requires an applicant for any federal permit that proposes an activity which may result in a discharge to "waters of the United States" to obtain certification from the State that the discharge will comply with other provisions of the Act. The Regional Water Quality Control Board (RWQCB) provides certification.

- Section 402 establishes the National Pollution Discharge Elimination System (NPDES) a permitting system for the discharge of any pollutant (except for dredge or fill material) into waters of the United States. This permit program is administered by the RWQCB, and discussed in detail below.
- Section 404 establishes a permit program for the discharge of dredge or fill material into waters of the United States. This permit program is administered by the United States Army Corps of Engineers (USACE).

California Porter-Cologne Water Quality Control Act

The State of California's Porter-Cologne Water Quality Control Act (California Water Code Section 13000, et seq.) provides the basis for water quality regulation within California. The Act requires a "Report of Waste Discharge" for any discharge of waste (liquid, solid, or otherwise) to land or surface waters that may impair a beneficial use of surface or groundwater of the State. Waste discharge requirements (WDR) resulting from the report are issued by the RWQCB, as discussed below. In practice, these requirements are typically integrated within the NPDES permitting process.

The State Water Resources Control Board (SWRCB) carries out its water quality protection authority through the adoption of specific Water Quality Control Plans (Basin Plans). These plans establish water quality standards for particular bodies of water. California water quality standards are composed of three parts: the designation of beneficial uses of water, water quality objectives to protect those uses, and implementation programs designed to achieve and maintain compliance with the water quality objectives.

Lahontan Regional Water Quality Control Board

The Lahontan RWQCB regulates State water quality standards in the project area. Beneficial uses and water quality objectives for surface water and groundwater resources in the project area are established in the water quality control plans of each RWQCB and mandated by the State.

Porter-Cologne Act and the CWA

The RWQCB primarily implements drainage basin plan policies through issuing waste discharge requirements for waste discharges to land and water. The RWQCB is also responsible for administering the NPDES permit program, which is designed to manage and monitor point and nonpoint source pollution. The RWQCB also implements the CWA Section 303(d) total maximum daily load (TMDL) process, which consists of identifying candidate water bodies where water quality is impaired by the presence of pollutants. The TMDL process is implemented to determine the assimilative capacity of the water body for the pollutants of concern and to establish equitable allocation of the allowable pollutant loading within the watershed. CWA Section 401 requires an

applicant pursuing a federal permit to conduct any activity that may result in a discharge of a pollutant to obtain a water quality certification (or waiver) from the applicable RWQCB.

The RWQCB primarily implements drainage basin plan policies through issuing waste discharge requirements for waste discharges to land and water. The RWQCB is also responsible for administering the NPDES permit program, which is designed to manage and monitor point and nonpoint source pollution.

Surface Water Quality

NPDES stormwater permits for general construction activity are required for projects that disturb more than one acre of land. Consequently, this project is subject to the Statewide NPDES permit for construction related activities from the SWRCB. The County will implement a SWPPP which will demonstrate compliance with the State NPDES permit, and provide protection of water quality during construction and operation of the project and will submit the SWPPP to the RWQCB along with the required Notice of Intent prior to commencement of grading activities.

Project Design and Construction Features

Typically, the following would occur during grading and construction of this Project:

- Erosion control. Employ measures to prevent the movement of soil by wind or water during construction and may include watering, and physical barriers to the movement of soil particles.
- Tracking of Soil. Employ measures to effectively minimize the tracking of soil by vehicle and may include gravel driveways, wheel washes and street sweeping.
- Wastes and Cleanup. The SWPPP must also address washout, cleanup and disposal related to debris, trash, concrete, asphalt, paint, coatings, solvents and other materials applicable to preparation and construction at the project site.
- Other Reasonable Best Management Practices (BMPs). The SWPPP must also implement other applicable BMP's as needed to keep pollutants away from stormwater. The SWPPP must also identify additional applicable measures taken during the storm season and when storms are anticipated.

Water Quality Management Plan

As a standard construction procedure, the County and the RWQCB will prepare and implement a Water Quality Management Plan (WQMP), consistent with the Municipal Separate Storm Sewer System (MS4) permit that will control and reduce polluted urban runoff from the project site. A WQMP is required to provide specific BMPs to reduce urban runoff pollution.

The County's WQMP will implement various measures that typically include, but are not limited to, guidance, operation and maintenance for all source control, site design, and treatment control BMP's; that requires operation and maintenance, which include maximizing canopy interception and water conservation, landscape planning, efficient irrigation, storm drain system signage, trash storage areas and litter control, employee training/education program, protect slopes and channels, common area catch basin inspection, energy dissipaters, pervious concrete/alternative materials, and storm filter filtration systems. Standard conditions of the County WQMP also include providing a thorough description of operation and maintenance activities, and providing a schedule of the frequency of operation and maintenance for each BMP.

Mojave Desert Air Quality Management District

Air pollutants are regulated at the national, State, and air basin level; each agency has a different degree of responsibility. The United States Environmental Protection Agency (U.S. EPA) regulates at the national level. The California Air Resources Board (CARB) regulates at the State level. The Mojave Desert Quality Management District (MDAQMD) regulates at the air basin level.

MDAQMD is responsible for controlling emissions primarily from stationary sources. MDAQMD maintains air quality monitoring stations throughout the Air Basin. MDAQMD, in coordination with the Southern California Association of Governments (SCAG), is also responsible for developing, updating, and implementing the Air Quality Management Plan (AQMP) for the Air Basin. An AQMP is a plan prepared by an air pollution control district for a county or region designated as a nonattainment area to bring the area into compliance with the requirements of the national and/or California ambient air quality standards. (Air basins where ambient air quality standards are exceeded are referred to as "nonattainment" areas.)

Project Design and Construction Features

The following MDAQMD Rule includes, but is not limited to, the rules that are applicable to this project.

MDAQMD Rule 403.2 governs emissions of fugitive dust. Compliance with this rule is achieved through application of standard BMPs in construction and operation activities, such as application of water or chemical stabilizers to disturbed soils, covering haul vehicles, reduce use of non-essential earthmoving equipment under high wind conditions.

Lighting

The County of San Bernardino General Plan has Ordinance 3900 in place, which outlines specific standards relating to glare and outdoor lighting. Those standards are included in Sections 83.07 of the County of San Bernardino Development Code (2007). According to the County of San Bernardino County Development Code, Section 83.07, lighting should be shielded in compliance with the

requirements outlined in Table 83-7 (Shielding Requirements for Outdoor Lighting in the Mountain Region and Desert Region), in order to preclude light pollution or light trespass.

Noise

Temporary construction activities are exempt, if they are conducted between the hours of 7:00 a.m. and 7:00 p.m., except Sundays and Federal holidays, per County Zoning Code 83 .01.080 (g).

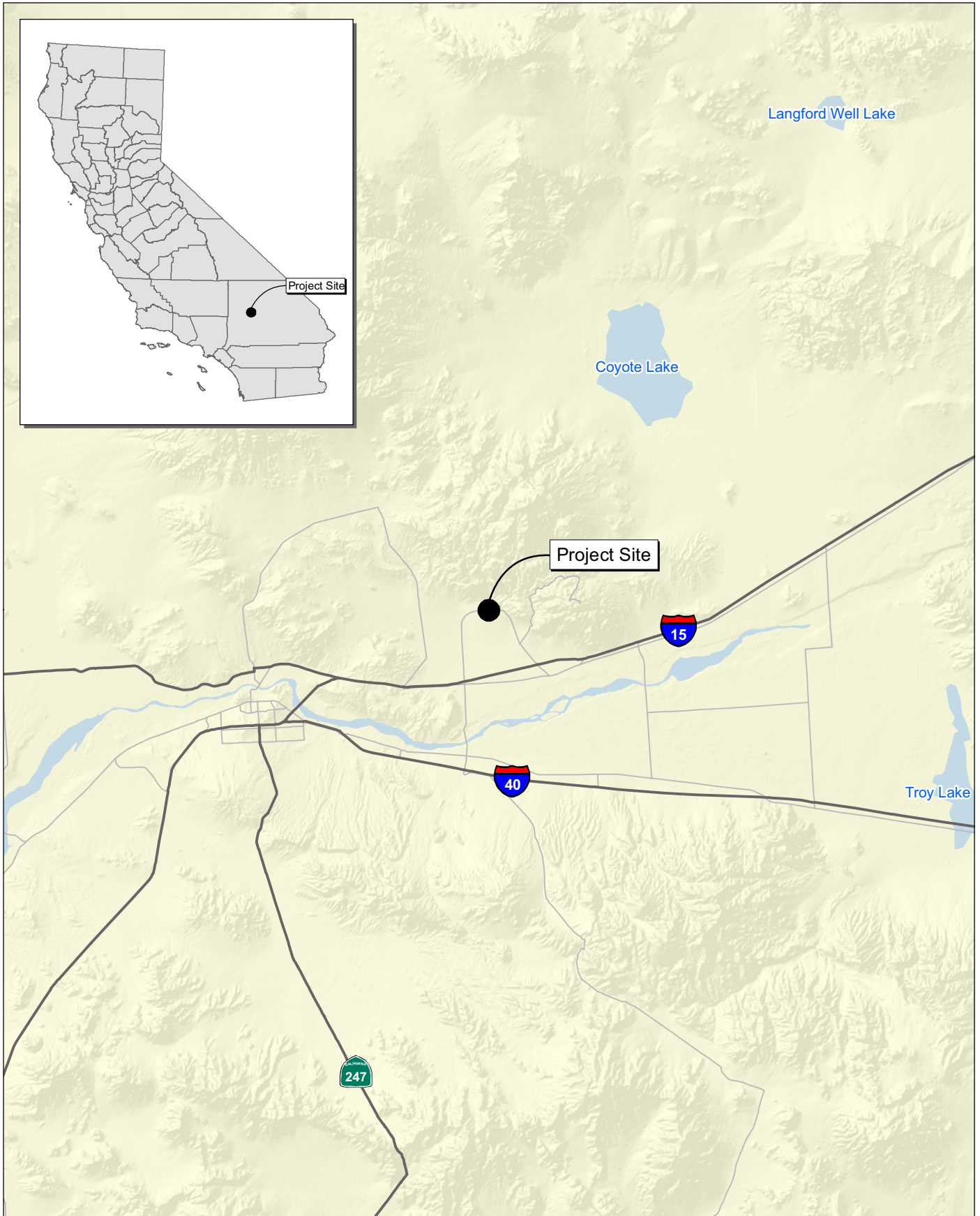
General Measures

The project will be designed and implemented in accordance with the provisions of the "Standard Specifications for Public Works Construction (the Greenbook)," prepared and promulgated by the Southern California Chapters of the American Public Works Association and the Associated General Contractors of California.

The project will comply with applicable local ordinances, standards, and procedures for improvement design, construction, and operation.

ACTIONS AND APPROVALS:

The County of San Bernardino has primary governmental authority for the approval and supervision of the proposed project. As such, the County of San Bernardino is the Lead Agency for this project, as defined under CEQA and is responsible for completing this Initial Study/Mitigated Negative Declaration (IS/MND), and to assess and disclose the environmental consequences associated with project implementation. Additional discretionary actions may also be required of other governmental entities. This IS/MND is intended to serve as the CEQA compliance document for any necessary approvals by the County of San Bernardino, and other agencies.



Source: Census 2000 Data, The CaSIL, MBA GIS 2011.



Michael Brandman Associates

00520143 • 07/2011 | 1_regional.mxd

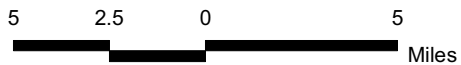
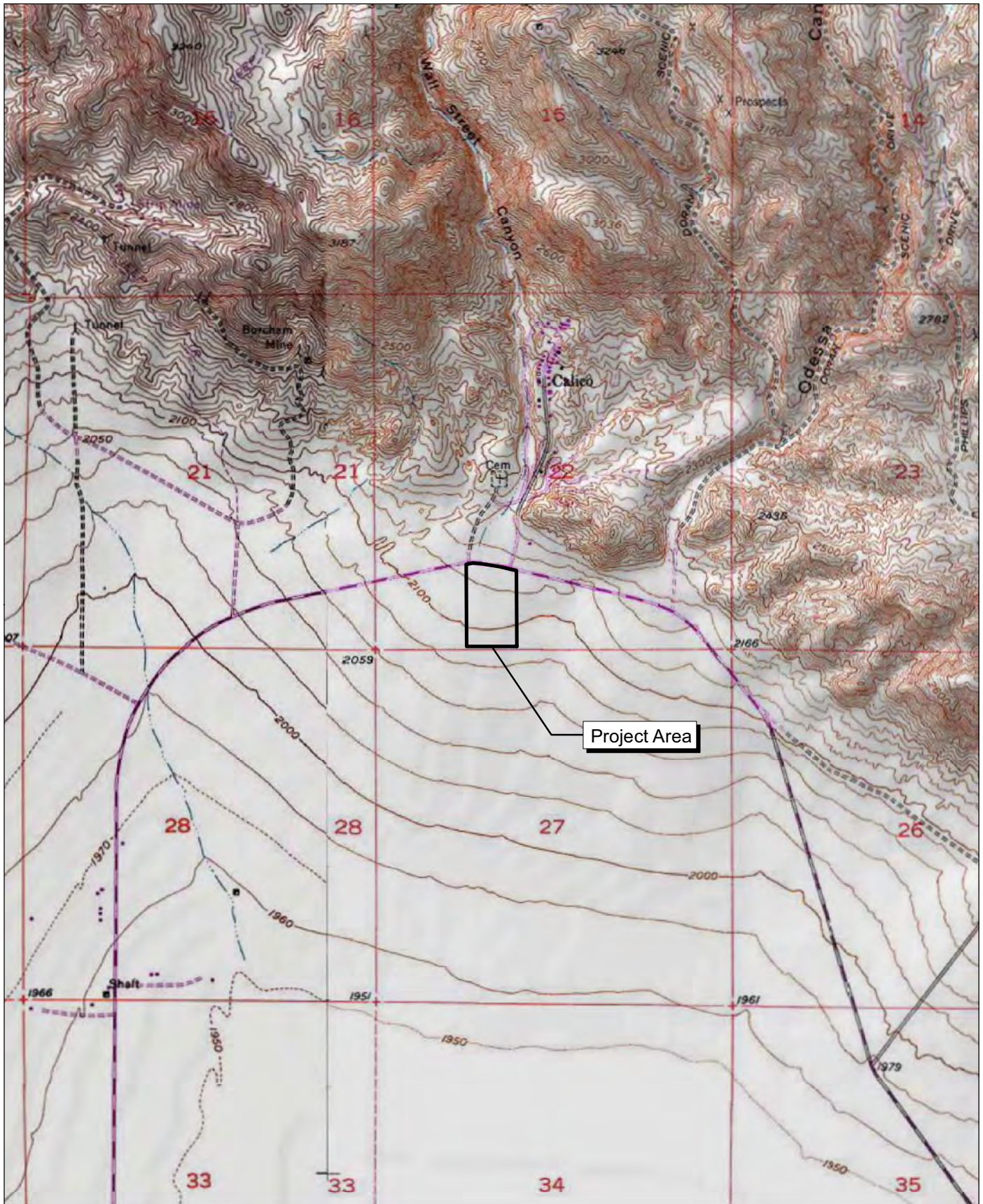


Exhibit 1 Regional Location Map

COMMUNITY OF CALICO, COUNTY OF SAN BERNARDINO
THE CALICO WATER TREATMENT PROJECT
INITIAL STUDY MITIGATED NEGATIVE DECLARATION



Source: TOPO! USGS Yermo, CA (1970) 7.5' DRG.



Michael Brandman Associates

00520143 • 07/2011 | 2_local_vicinity.mxd



Exhibit 2 Local Vicinity Map

COMMUNITY OF CALICO, COUNTY OF SAN BERNARDINO
THE CALICO WATER TREATMENT PROJECT
INITIAL STUDY MITIGATED NEGATIVE DECLARATION



Source: BING Maps, (c) 2010 Microsoft Corporation and its data suppliers.



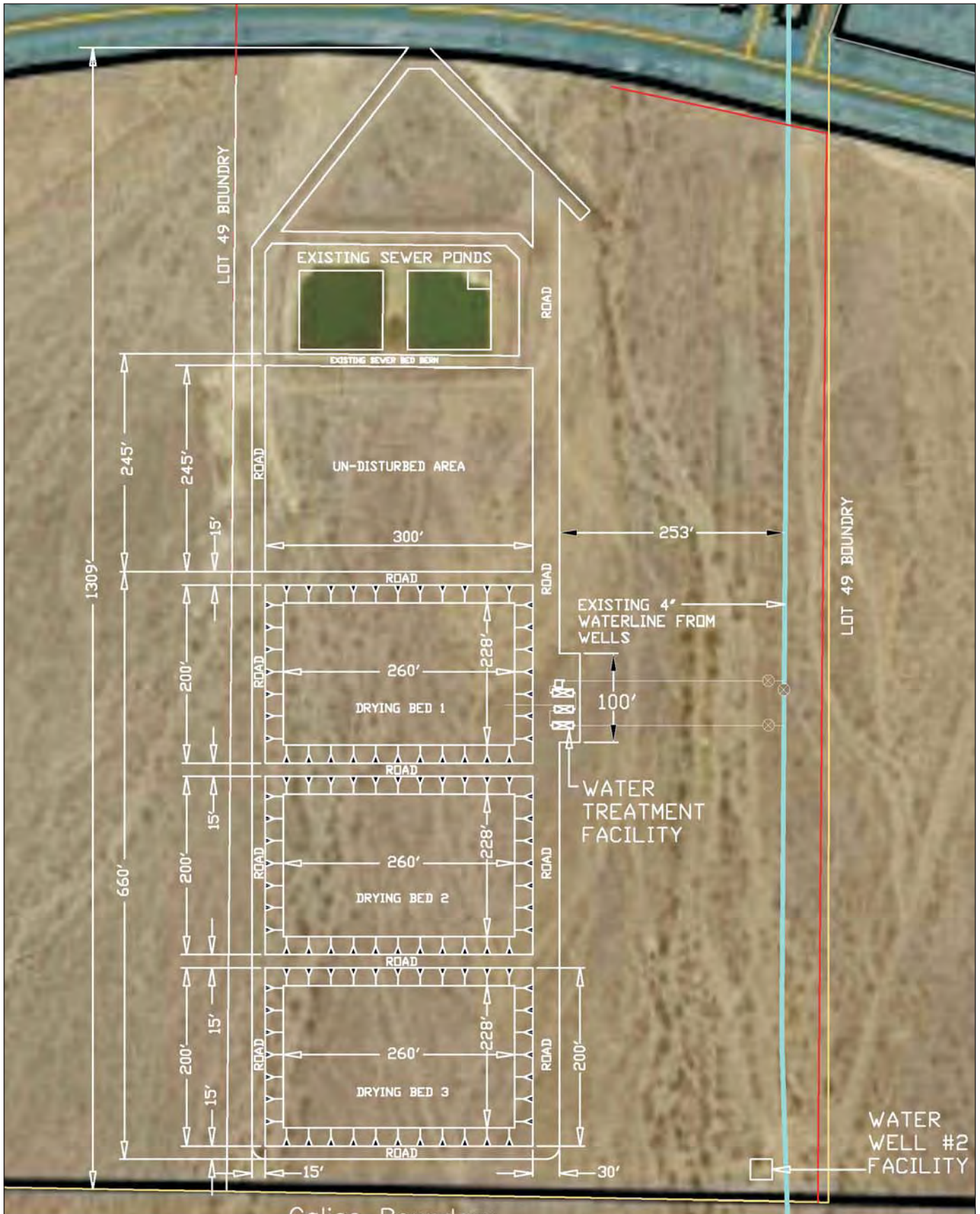
Michael Brandman Associates

00520143 • 07/2011 | 3_local_aerial.mxd



Exhibit 3 Local Vicinity Map - Aerial Base

COMMUNITY OF CALICO, COUNTY OF SAN BERNARDINO
THE CALICO WATER TREATMENT PROJECT
INITIAL STUDY MITIGATED NEGATIVE DECLARATION



Source:



Michael Brandman Associates

00520143 • 07/2011 | 4_site_plan.cdr

Exhibit 4 Site Plan

EVALUATION FORMAT:

This IS is prepared in compliance with the CEQA pursuant to Public Resources Code Section 21000, et seq. and the State CEQA Guidelines (California Code of Regulations Section 15000, et seq.). Specifically, the preparation of an IS is guided by Section 15063 of the State CEQA Guidelines. This format of the study is presented as follows. The project is evaluated based upon its effect on eighteen (18) major categories of environmental factors. Each factor is reviewed by responding to a series of questions regarding the impact of the project on each element of the overall factor. The IS Checklist provides a formatted analysis that provides a determination of the effect of the project on the factor and its elements. The effects of the project are categorized into one of the following four categories of possible determinations:

Potential Significant Impact	Less than Significant With Mitigation Incorporated	Less than Significant	No Impact
------------------------------	--	-----------------------	-----------

Substantiation is then provided to justify each determination. One of the four following conclusions is then provided as a summary of the analysis for each of the major environmental factors.

1. **No Impact:** No impacts are identified or anticipated; therefore, no mitigation measures are required.
2. **Less than Significant Impact:** No significant adverse impacts are identified or anticipated, and, therefore, no mitigation measures are required.
3. **Less than Significant Impact with Mitigation Incorporated:** Possible significant adverse impacts have been identified or anticipated and mitigation measures are required as a condition of project approval to reduce these impacts to a level below significant. The required mitigation measures are identified under each topical section, and are also listed at the end of this Initial Study.
4. **Potentially Significant Impact:** Significant adverse impacts have been identified or are anticipated that cannot be mitigation to level that is less than. An Environmental Impact Report (EIR) is required to evaluate these impacts. However, since this project is able to mitigate all potential adverse impacts to levels that are less than significant, there are no potentially significant impacts.

ENVIRONMENTAL FACTORS POTENTIALLY AFFECTED:

The environmental factors checked below would be potentially affected by this project, involving at least one impact that is a "Potentially Significant Impact" as indicated by the checklist on the following pages.

- | | | |
|---|---|---|
| <input type="checkbox"/> Aesthetics | <input type="checkbox"/> Agriculture and Forest Resources | <input type="checkbox"/> Air Quality |
| <input type="checkbox"/> Biological Resources | <input type="checkbox"/> Cultural Resources | <input type="checkbox"/> Geology / Soils |
| <input type="checkbox"/> Greenhouse Gas Emissions | <input type="checkbox"/> Hazards & Hazardous Materials | <input type="checkbox"/> Hydrology / Water Quality |
| <input type="checkbox"/> Land Use / Planning | <input type="checkbox"/> Mineral Resources | <input type="checkbox"/> Noise |
| <input type="checkbox"/> Population / Housing | <input type="checkbox"/> Public Services | <input type="checkbox"/> Recreation |
| <input type="checkbox"/> Transportation / Traffic Utilities / Service Systems | <input type="checkbox"/> Utilities / Service Systems | <input type="checkbox"/> Mandatory Findings of Significance |

DETERMINATION: (To be completed by the Lead Agency)

On the basis of this initial evaluation, the following finding is made:

- The proposed project COULD NOT have a significant effect on the environment, and a NEGATIVE DECLARATION will be prepared.
- Although the proposed project could have a significant effect on the environment, there will not be a significant effect in this case because revisions in the project have been made by or agreed to by the project proponent. A MITIGATED NEGATIVE DECLARATION will be prepared.
- The proposed project MAY have a significant effect on the environment, and an ENVIRONMENTAL IMPACT REPORT is required.
- The proposed project MAY have a "potentially significant impact" or "potentially significant unless mitigated" impact on the environment, but at least one effect 1) has been adequately analyzed in an earlier document pursuant to applicable legal standards, and 2) has been addressed by mitigation measures based on the earlier analysis as described on attached sheets. An ENVIRONMENTAL IMPACT REPORT is required, but it must analyze only the effects that remain to be addressed.
- Although the proposed project could have a significant effect on the environment, because all potentially significant effects (a) have been analyzed adequately in an earlier EIR or NEGATIVE DECLARATION pursuant to applicable standards, and (b) have been avoided or mitigated pursuant to that earlier EIR or NEGATIVE DECLARATION, including revisions or mitigation measures that are imposed upon the proposed project, nothing further is required.

Prepared by
Charles Holcombe, Project Manager, Michael Brandman
Associates

Prepared for:
James A. Orayets, Division Manager
County of San Bernardino Special Districts Department

9-7-11
Date

9/7/11
Date

Issues	Potentially Significant Impact	Less than Significant with Mitigation Incorporated	Less than Significant	No Impact
I. AESTHETICS - Would the project				
a) Have a substantial adverse effect on a scenic vista?	<input type="checkbox"/>	<input type="checkbox"/>	<input checked="" type="checkbox"/>	<input type="checkbox"/>
b) Substantially damage scenic resources, including but not limited to trees, rock outcroppings, and historic buildings within a state scenic highway?	<input type="checkbox"/>	<input type="checkbox"/>	<input checked="" type="checkbox"/>	<input type="checkbox"/>
c) Substantially degrade the existing visual character or quality of the site and its surroundings?	<input type="checkbox"/>	<input type="checkbox"/>	<input checked="" type="checkbox"/>	<input type="checkbox"/>
d) Create a new source of substantial light or glare, which would adversely affect day or nighttime views in the area?	<input type="checkbox"/>	<input type="checkbox"/>	<input checked="" type="checkbox"/>	<input type="checkbox"/>

SUBSTANTIATION: (Check if project is located within the view-shed of any Scenic Route listed in the General Plan):

- a) **Less than Significant Impact.** According to the San Bernardino County General Plan, there are no designated scenic vistas on or adjacent to the project site. In addition, the low height and small size of structures and berms associated with the project will not affect or obscure any of the surrounding views. Therefore, no significant adverse impacts are identified or anticipated and no mitigation measures are required.
- b) **Less than Significant Impact.** Based on California Scenic Highway Mapping System, the project site is not within the vicinity of an officially designated state scenic highway. The County of San Bernardino does identify Interstate 15 as a Scenic Highway. However, I-15 is approximately 2.2 miles away from the Project site, and, given the small size and low-lying characteristics of the project, the long distance view from the freeway is not expected to be compromised by Project implementation. In addition, the Project will not substantially damage other scenic resources as there are none on or proximate to the site. Therefore, no significant adverse impacts are identified or anticipated and no mitigation measures are required.
- c) **Less than Significant Impact.** The existing character can be described generally as desert scrub. Although implementation of the Project will change a little less than five acres into treatment ponds, from a visual perspective impacts of this change in terms of aesthetics would be minimal and are considered less than significant. Most of these changes will not

Issues	Potentially Significant Impact	Less than Significant with Mitigation Incorporated	Less than Significant	No Impact
--------	--------------------------------	--	-----------------------	-----------

be very noticeable from a distance and the nearest residence is over 3,500 feet to the southwest of the Project site. Therefore, no significant adverse impacts are identified or anticipated and no mitigation measures are required.

- d) **Less than Significant Impact With Mitigation.** Little or no additional lighting will be introduced by implementation of the Project. The minimum lighting necessary to provide for security and safety will be introduced. In addition, given the relatively remote location of the project, what lighting is provided will not affect residences or vehicles driving on Ghost Town Road. Therefore, no significant adverse impacts are identified or anticipated and no mitigation measures are required.

II. AGRICULTURE AND FOREST RESOURCES – In determining whether impact to forest resources are significant environmental effects, lead agencies may refer to information compiled by the California Department of Forestry and Fire Protection regarding the State’s inventory of forest land, including the Forest and Range Assessment project; and forest carbon measurement methodology provided in Forest Protocols adopted by the California Air Resources Board. Would the project:

- | | | | | |
|---|--------------------------|--------------------------|--------------------------|-------------------------------------|
| a) Convert Prime Farmland, Unique Farmland, or Farmland of Statewide Importance (Farmland) as shown on the maps prepared pursuant to the Farmland Mapping and Monitoring Program of the California Resources Agency, to non-agricultural use? | <input type="checkbox"/> | <input type="checkbox"/> | <input type="checkbox"/> | <input checked="" type="checkbox"/> |
| b) Conflict with existing zoning for agricultural use, or a Williamson Act contract? | <input type="checkbox"/> | <input type="checkbox"/> | <input type="checkbox"/> | <input checked="" type="checkbox"/> |
| c) Involve other changes in the existing environment, which, due to their location or nature, could result in conversion of Farmland to non-agricultural use? | <input type="checkbox"/> | <input type="checkbox"/> | <input type="checkbox"/> | <input checked="" type="checkbox"/> |
| d) Conflict with existing zoning for, or cause rezoning of, forest land (as defined in Public Resources Code section 12220(g)), timberland (as defined by Government Code section 51104(g))? | <input type="checkbox"/> | <input type="checkbox"/> | <input type="checkbox"/> | <input checked="" type="checkbox"/> |

Issues	Potentially Significant Impact	Less than Significant with Mitigation Incorporated	Less than Significant	No Impact
e) Result in the loss of forest land or conversion of forest land to non-forest use?	<input type="checkbox"/>	<input type="checkbox"/>	<input type="checkbox"/>	<input checked="" type="checkbox"/>

SUBSTANTIATION: (Check if project is located in the Important Farmlands Overlay):

- a) **No Impact.** According to California Department of Conservation Farmland Mapping and Monitoring Program Maps (FMMP 2006), the project site does not contain any Prime Farmland, Unique Farmland or Farmland of State/Local Importance. The site is not currently used for farming nor has it been used for farming in the past. Thus, there will be no impact to loss of farmland as a result of the project.
- b) **No Impact.** The site is not currently been used for farming nor has it been used for farming in the past and is not located within an Agriculture Zone. In addition, the project site is not within or the subject of a Williamson Act contract. Therefore, implementation of the proposed project will not conflict with existing zoning for any agricultural uses or Williamson Act contracts.
- c) **No Impact.** The project site is not currently being, utilized for farmland, nor are any of the surrounding areas being used for farming. There are no existing agricultural uses in the vicinity of the project site, and no impacts are expected related to the conversion of farmland to non-agricultural uses. Therefore, no impacts are identified or anticipated and no mitigation measures are required.
- d) **No Impact.** The project site does not contain forest land, timberland, nor does is conflict with zoning for forest land, timberland or timberland construction.
- e) **No Impact.** The project site does not contain forest land.

III. AIR QUALITY - Where available, the significance criteria established by the applicable air quality management or air pollution control district might be relied upon to make the following determinations. Would the project:

- a) Conflict with or obstruct implementation of the applicable air quality plan?

Issues	Potentially Significant Impact	Less than Significant with Mitigation Incorporated	Less than Significant	No Impact
b) Violate any air quality standard or contribute substantially to an existing or projected air quality violation?	<input type="checkbox"/>	<input type="checkbox"/>	<input checked="" type="checkbox"/>	<input type="checkbox"/>
c) Result in a cumulatively considerable net increase of any criteria pollutant for which the project region is non-attainment under an applicable federal or state ambient air quality standard (including releasing emissions which exceed quantitative thresholds for ozone precursors)?	<input type="checkbox"/>	<input type="checkbox"/>	<input checked="" type="checkbox"/>	<input type="checkbox"/>
d) Expose sensitive receptors to substantial pollutant concentrations?	<input type="checkbox"/>	<input type="checkbox"/>	<input checked="" type="checkbox"/>	<input type="checkbox"/>
e) Create objectionable odors affecting a substantial number of people?	<input type="checkbox"/>	<input type="checkbox"/>	<input checked="" type="checkbox"/>	<input type="checkbox"/>

SUBSTANTIATION: *(Discuss conformity with the Mojave Air Quality Management Plan, if applicable):*

a) **Less than Significant Impact.**

A significant impact would occur if the project would conflict with or obstruct implementation of the applicable air quality plan. The Mojave Desert Air Quality Management District (MDAQMD) CEQA Guidelines states the following regarding conformance with the Air Quality Management Plan (AQMP):

A project is non-conforming if it conflicts with or delays implementation of any applicable attainment or maintenance plan. A project is conforming if it complies with all applicable MDAQMD rules and regulations, complies with all proposed control measures that are not yet adopted from the applicable plan(s), and is consistent with the growth forecasts in the applicable plan(s) (or is directly included in the applicable plan). (MDAQMD 2009)

Criterion 1: Compliance with District Rules and Regulations:

The proposed project will comply with all applicable District rules and regulations, which could include but is not limited to District Rule 203, Rule 219, Rule 402, Rule 403, Rule 461, Rule 462, Rule 463, Rule 1303, and Regulation XII. The project would result in a less than

<i>Issues</i>	<i>Potentially Significant Impact</i>	<i>Less than Significant with Mitigation Incorporated</i>	<i>Less than Significant</i>	<i>No Impact</i>
---------------	---------------------------------------	---	------------------------------	------------------

significant impact according to this criterion.

Criterion 2: Compliance with Proposed Control Measures:

The District prepared a Federal 8-Hour Ozone Attainment Plan (Plan) for the Western Mojave Desert Non-attainment Area, which was adopted on June 9, 2008. The Plan does not contain proposed control measures for direct ozone precursors. However, the District, “is committed to having all applicable Federal Reasonably Available Control Technology rules, and is currently performing analyses on the feasibility of adopting additional rules under the State of California ‘all feasible measures’ mandate. In addition, the District will experience additional future emission reductions resulting from existing and proposed federal and State control measures affecting mobile and area sources” (MDAQMD 2008).

A review of the District’s proposed rule development indicates that Rule 301 has minor changes in the permit fees charged for various permit activities required pursuant to the provisions of Regulation II (Permits) and Regulation XIII (New Source Review). The changes would be effective January 1, 2012. If the project requires permits from the District, the project proponents would pay applicable fees that are in effect at the time the permit is obtained.

The project would comply with all applicable control measures; therefore, the project would have a less than significant impact according to this criterion.

Criterion 3: Consistent with Growth Forecasts in the Applicable Plan:

According to the District’s Guidelines, conformity with growth forecasts can be established by demonstrating that the project is consistent with the land use plan that was used to generate the growth forecast. An example of a non-conforming project would be one that increases the gross number of dwelling units, increases the number of trips, and/or increases the overall vehicle miles traveled in an affected area (relative to the applicable land use plan).

The Project site has a General Plan land use and zoning designation of Resource Conservation (RC) which allows the use proposed by the Project. Therefore, the Project,

<i>Issues</i>	<i>Potentially Significant Impact</i>	<i>Less than Significant with Mitigation Incorporated</i>	<i>Less than Significant</i>	<i>No Impact</i>
---------------	---------------------------------------	---	------------------------------	------------------

which is expected to create a very small number of vehicle trips, would be consistent with the District’s AQMP.

- b) **Less than Significant Impact.** The emissions from the project would be minimal and would only be from grading, operation of the small water treatment plant, and occasional vehicles that will visit the site.
- c) **Less than Significant Impact.** All air quality impacts at the Project level are less than significant, and given the very minor emissions generated by the project, cumulative impacts would also be significant.
- d) **Less than Significant Impact.** The nearest sensitive receptors are single family homes that are located approximately 3,500 feet to the southwest of the Project site. Little or no toxic air contaminants are expected to be generated from the Project site, although a small diesel back-up generator may be utilized in the future. Even if a generator is located on the site in the future, given the distance of the project site from the residences, pollutants would be highly dispersed and impacts would be less than significant.
- e) **Less than Significant Impact.** The evaporation ponds and package water treatment plant associated with the project are not expected to create significant objectionable odors. In addition the project is located far enough from residents in the vicinity and users of the Calico Ghost Town Regional Park that, if any odors were generated, impacts would be less than significant.

IV. BIOLOGICAL RESOURCES - Would the project:

- a) Have substantial adverse effects, either directly or through habitat modifications, on any species identified as a candidate, sensitive or special status species in local or regional plans, policies, or regulations, or by the California Department of Fish and Game (CDFG) or U.S. Fish and Wildlife Service (USFWS)?

Issues	Potentially Significant Impact	Less than Significant with Mitigation Incorporated	Less than Significant	No Impact
b) Have a substantial adverse effect on any riparian habitat or other sensitive natural community identified in local or regional plans, policies, and regulations or by the CDFG or USFWS?	<input type="checkbox"/>	<input type="checkbox"/>	<input checked="" type="checkbox"/>	<input type="checkbox"/>
c) Have a substantial adverse effect on federally protected wetlands as defined by Section 404 of the CWA (including, but not limited to, marsh, vernal pool, coastal, etc...) through direct removal, filling, hydrological interruption, or other means?	<input type="checkbox"/>	<input type="checkbox"/>	<input checked="" type="checkbox"/>	<input type="checkbox"/>
d) Interfere substantially with the movement of any native resident or migratory fish or wildlife species or with established native resident or migratory wildlife corridors, or impede the use of native wildlife nursery sites?	<input type="checkbox"/>	<input type="checkbox"/>	<input checked="" type="checkbox"/>	<input type="checkbox"/>
e) Conflict with any local policies or ordinances protecting biological resources, such as a tree preservation policy or ordinance?	<input type="checkbox"/>	<input type="checkbox"/>	<input checked="" type="checkbox"/>	<input type="checkbox"/>
f) Conflict with the provisions of an adopted Habitat Conservation Plan (HCP), Natural Community Conservation Plan, or other approved local, regional or state habitat conservation plan?	<input type="checkbox"/>	<input type="checkbox"/>	<input checked="" type="checkbox"/>	<input type="checkbox"/>

SUBSTANTIATION: (Check if project is located in the Biological Resources Overlay or contains habitat for any species listed in the California Natural Diversity Database

a) **Less than Significant Impact with Mitigation.** MBA prepared a Biological Resources Assessment Report for the proposed project in October 2010 (MBA 2010b) and is located within Appendix A. In addition, while the project site is outside USFWS Desert Tortoise Critical Habitat area, it does contain moderate quality desert tortoise habitat. MBA also prepared a Desert Tortoise survey which indicated that no live desert tortoises, carcasses, scat or any other desert tortoise sign were found during the survey.

The Biological Resources Assessment also concluded that the project site does not contain any other critical habitat areas and no threatened or endangered species were found on the Project site.

<i>Issues</i>	<i>Potentially Significant Impact</i>	<i>Less than Significant with Mitigation Incorporated</i>	<i>Less than Significant</i>	<i>No Impact</i>
---------------	---------------------------------------	---	------------------------------	------------------

The Migratory Bird Treaty Act (MBTA) protects all common wild birds found in the United States (U.S.) except the house sparrow, starling, feral pigeon, and resident game birds such as pheasant, grouse, quail, and wild turkey. The MBTA makes it unlawful for anyone to kill, capture, collect, possess, buy, sell, trade, ship, import, or export any migratory bird including feathers, parts, nests, or eggs. The project site contains creosote bush scrub, which could provide nesting areas for several bird species including ground nesting birds. There are no large trees within the project area and therefore does not provide suitable nesting habitat for raptors and other tree nesting birds. However, the project site does contain suitable nesting habitat for several shrub and ground-dwelling avian species. Therefore, without adequate mitigation to protect bird species during the nesting season, nests could inadvertently be destroyed and birds killed.

Mitigation Measure

BR-1: If vegetation removal, soil disturbance, or any other construction-related activity is to occur during the avian nesting season (February 1 through August 31), a preconstruction nesting bird survey shall be conducted not greater than seven days prior to initiation of construction. If nests are discovered, they shall be avoided by an appropriate buffer, as determined by a qualified wildlife biologist. The temporary “no construction” area would have to be maintained until the nest has completed its cycle, as determined by a qualified wildlife biologist. Once the nest cycle is complete and all nestings have fledged and left the nest, then construction in the area could resume. Construction activity may only occur within the temporary “no construction” area at the discretion of a biological monitor. If initial ground-disturbing activities or site clearing is proposed to take place outside of the nesting season (September 1 through January 31), then a pre-construction survey would not be required and construction could commence unimpeded.

b) **Less than Significant Impact.** The Biological Resources Assessment Report (MBA 2010b) indicated that the project site does not contain any riparian habitat. Similarly, no sensitive plant communities or special status species (flora and fauna) were observed onsite and none were anticipated to inhabit the project site. Therefore, the project's substantial adverse

<i>Issues</i>	<i>Potentially Significant Impact</i>	<i>Less than Significant with Mitigation Incorporated</i>	<i>Less than Significant</i>	<i>No Impact</i>
---------------	---------------------------------------	---	------------------------------	------------------

effect on any riparian habitat or other sensitive natural community is less than significant.

- c) **Less than Significant Impact.** A jurisdictional assessment study was conducted for the proposed project as a part of the Biological Resources Assessment Report (MBA 2010b). As per the jurisdictional assessment, there are no federally protected wetlands as defined by Section 404 of the Clean Water Act. Accordingly, the impacts associated with the federally protected wetlands are less than significant. Although the Project Site does not contain drainage resources with bed and bank and evidence of recent flow and scour that evidence a clear and definable ordinary high water mark (OHWM) two drainage areas will be considered CDFG jurisdictional streambed, and will also be subject to the Jurisdiction of the RWQCB under state water quality statutes (Porter-Cologne, §13050). However, neither of these two drainage areas will be affected by as the area that will be disturbed by the Project has been designed to avoid these areas. The Jurisdictional Assessment provide more detailed information on this matter and can be found in Appendix B. .
- d) **Less than Significant Impact.** The proposed project is not within a significant wildlife movement corridor or nursery site (MBA 2010). Accordingly, development of the proposed project will not have a substantially adverse impact on wildlife movement corridors or nursery sites.
- e) **Less than Significant Impact.** The Project is in accordance with applicable county ordinances and policies.
- f) **Less than Significant Impact.** There is no local, regional or state approved conservation plan that is applicable for the proposed project. Therefore, the proposed project will not conflict with the provisions of any adopted habitat/natural community conservation plan.

V. CULTURAL RESOURCES - Would the project

- a) Cause a substantial adverse change in the significance of a historical resource as defined in §15064.5?

Issues	Potentially Significant Impact	Less than Significant with Mitigation Incorporated	Less than Significant	No Impact
b) Cause a substantial adverse change in the significance of an archaeological resource pursuant to §15064.5?	<input type="checkbox"/>	<input type="checkbox"/>	<input checked="" type="checkbox"/>	<input type="checkbox"/>
c) Directly or indirectly destroy a unique paleontological resource or site or unique geologic feature?	<input type="checkbox"/>	<input checked="" type="checkbox"/>	<input type="checkbox"/>	<input type="checkbox"/>
d) Disturb any human remains, including those interred outside of formal cemeteries?	<input type="checkbox"/>	<input type="checkbox"/>	<input checked="" type="checkbox"/>	<input type="checkbox"/>

SUBSTANTIATION: (Check if the project is located in the Cultural or Paleontologic Resources overlays or cite results of cultural resource review):

a) **Less than Significant Impact.** The Calico Ghost Town was delineated as a California Historic Landmark in 1973. In order to assess the potentially adverse impacts associated with implementation of the project, a cultural resources survey was conducted on October 23, 2010 and the findings of the survey are provided in a Cultural Resources Assessment, and included in Appendix B of this document.

During the survey a new feature, approximately 300x100 feet in size, was identified consisting of a dense, nearly all metal can artifact scatter bisected by a dirt road. The cans are clustered on the shoulders of the road, portions of which may have been pushed to the side during blading. It is estimated that there are 1,000-1,200 individual can and metal fragments at this feature. The cans appear to have been made between 1880 and 1930, but the condition of the artifacts suggest they came from elsewhere as they are not overly rusty compared to other scatter sites in the vicinity. Information regarding this new feature has been documented in the Cultural Resources Assessment (see Appendix D of the Cultural Resources Assessment).

For California Historic Landmarks such as the Calico Ghost Town, the contributing elements, which convey the historically significant aspect of a site, and non-contributing elements that make up a Landmark are delineated by a professional. The new feature is considered a non-contributing element for the significant County-listed and State Landmark listed Town of Calico Historic Landmark because it has no depth and the types of artifacts appear very limited. Because it is non-contributing, potential impacts of removal of the can

<i>Issues</i>	<i>Potentially Significant Impact</i>	<i>Less than Significant with Mitigation Incorporated</i>	<i>Less than Significant</i>	<i>No Impact</i>
---------------	---------------------------------------	---	------------------------------	------------------

scatter during construction would be less than significant.

In order to evaluate potential impacts to Native American historical and archaeological resources, on September 28, 2010, MBA sent a letter to the Native American Heritage Commission (NAHC) in an effort to determine whether any sacred sites are listed on their Sacred Lands file for this portion of the County. These efforts were associated with fact finding only. The NAHC indicated that no sacred lands or traditional cultural properties are (listed in the NAHC database for the specific project area, but that several known sites are located nearby. To ensure that the NAHC-listed Native American tribal groups have a chance to provide feedback regarding the history of the project area, letters to each of the twelve tribal contacts were sent on October 19, 2010 (see Appendix A). No responses from any tribal authority have been obtained.

b) **Less than Significant.** There are no recorded archaeological resources on Project site and such resources were not discovered during the field survey. In addition, the exposed surface portions of the alluvial fan that fills the entirety of the Project site located on Lot 49 reflects modern erosional processes, is extremely coarse, and is unlikely to allow preservation of significant buried cultural components, including prehistoric or historic sites and Native American-related deposits.

c) **Less than Significant Impact with Mitigation.** T 3.4.3 - Paleontological Impacts

The County of San Bernardino General Plan (2007: Section V - Conservation Element ppV19 and V-20) requires that the Lead Agency take into account impacts to areas with the potential to contain paleontological resources (such as the Project site) during the planning process as indicated in the following General Plan requirements:

CO 3.4 Program 5 states: The County must consider that grading plans located in areas of known fossil occurrences, or demonstrated in a field survey to have fossils present, will have all rough grading (cuts greater than 3 feet) monitored by trained paleontologic crews working under the direction of a qualified professional, so that fossils exposed during grading can be recovered and preserved. Fossils include large and small vertebrate fossils; the latter recovered by screen washing of bulk samples.

Issues	Potentially Significant Impact	Less than Significant with Mitigation Incorporated	Less than Significant	No Impact
--------	--------------------------------	--	-----------------------	-----------

CO 3.4 Program 6 states: A report of findings with an itemized accession inventory will be prepared as evidence that monitoring has been successfully completed. A preliminary report will be submitted and approved prior to granting of building permits, and a final report will be submitted and approved prior to granting of occupancy permits. The adequacy of paleontologic reports will be determined in consultation with the Curator of Earth Science, San Bernardino County Museum.

In order to ensure that potential impacts to paleontological resources are less than significant and that the Project complies with General Plan requirements, the following Mitigation Measures are provided.

Mitigation Measures

CR-1: Prior to any earthmoving activities in the project area, a qualified Project Paleontologist shall develop a Paleontological Resource Impact Monitoring Program (PRIMP) associated with any resources found during construction within the project area. The PRIMP shall address appropriate sampling, analysis, documentation methodology and techniques used to obtain scientific information associated with each of the potentially impacted localities. The PRIMP shall require that all collected specimens be placed in an acceptable museum, repository or accredited institution, and the PRIMP must include a signed agreement between the Project Paleontologist and an accredited museum.

CR-2: Paleontologic monitoring shall be conducted during earthmoving activities that take place on intact Pleistocene-era fanglomerate deposits. It is estimated that intact deposits will be encountered about three feet below the modern ground surface. Earthmoving activities in areas where previously disturbed strata exist need not be monitored. The Project Paleontologist shall have the authority to reduce or cease monitoring once it is determined that the probability of encountering fossils is low.

CR-3: If a paleontologic monitor finds fossil remains, earthmoving activities shall be diverted around fossil site until the remains have been recovered and

<i>Issues</i>	<i>Potentially Significant Impact</i>	<i>Less than Significant with Mitigation Incorporated</i>	<i>Less than Significant</i>	<i>No Impact</i>
---------------	---------------------------------------	---	------------------------------	------------------

authorization from the Project Paleontologist has been provided in writing to the site manager. The fossil site shall be delineated by yellow tape on lathe at a distance of no greater than 50 feet of the find. If the fossil site expands through discovery, the taped delineation shall be increased to provide the 50-foot buffer.

CR-4: If fossil remains are found, approximately 6,000 pounds of the surrounding rock matrix shall be recovered from the fossil site to allow for proper recovery of smaller fossil remains, The samples shall be processed and all vertebrate and representative samples of invertebrate and plant fossils shall be collect and curated. Any recovered fossil remains shall be prepared to the point of identification and identified to the lowest taxonomic level possible by the Project Paleontologist. These items shall then be curated at an approved repository following standard museum accession standards.

CR-5: If fossil remains are found, a final report outlining the results and findings shall be prepared by the Project Paleontologist for submission to the County of San Bernardino and the museum repository following accessing of the fossil collection. The report shall consist of the following: a description of the geology and stratigraphy of the excavations, a summary of field and laboratory methods used, a faunal list of species recovered and an inventory of cataloged fossil specimens, an evaluation of the scientific importance of the specimens, and a discussion of the relationship of any newly recorded fossils to relevant fossils known to have been previously recorded in the fossil bearing rock unit.

d) **Less than Significant.** There is little chance that human remains will be encountered during construction-related earthmoving. Records indicate that no human remains have ever been found on the project site, and that the chance that human remains could be encountered during grading is extremely low due to heavy disturbance (MBA 201Db). Therefore, the project is expected to have no impact on any human remains, including those interred outside of formal cemeteries.

In addition, there is always the small possibility that ground-disturbing activities during

Issues	Potentially Significant Impact	Less than Significant with Mitigation Incorporated	Less than Significant	No Impact
--------	--------------------------------	--	-----------------------	-----------

construction may uncover previously unknown buried human remains. In the event of an accidental discovery or recognition of any human remains, California State Health and Safety Code § 7050.5 dictates that no further disturbance shall occur until the County Coroner has made the necessary findings as to origin and disposition pursuant to CEQA regulations and Public Resources Code (PRC) § 5097.98.

VI. GEOLOGY AND SOILS - Would the project:

- | | | | | |
|--|---|---|--|---|
| <p>a) Expose people or structures to potential substantial adverse effects, including the risk of loss, injury, or death involving:</p> <p>i. Rupture of a known earthquake fault, as delineated on the most recent Alquist-Priolo Earthquake Fault Zoning Map Issued by the State Geologist for the area or based on other substantial evidence of a known fault? Refer to Division of Mines and Geology Special Publication 42.</p> <p>ii. Strong seismic ground shaking?</p> <p>iii. Seismic-related ground failure, including liquefaction?</p> <p>iv. Landslides?</p> | <p><input type="checkbox"/></p> <p><input type="checkbox"/></p> <p><input type="checkbox"/></p> <p><input type="checkbox"/></p> <p><input type="checkbox"/></p> | <p><input type="checkbox"/></p> <p><input type="checkbox"/></p> <p><input type="checkbox"/></p> <p><input type="checkbox"/></p> <p><input type="checkbox"/></p> | <p><input checked="" type="checkbox"/></p> <p><input checked="" type="checkbox"/></p> <p><input checked="" type="checkbox"/></p> <p><input checked="" type="checkbox"/></p> <p><input checked="" type="checkbox"/></p> | <p><input type="checkbox"/></p> <p><input type="checkbox"/></p> <p><input type="checkbox"/></p> <p><input type="checkbox"/></p> <p><input type="checkbox"/></p> |
| <p>b) Result in substantial soil erosion or the loss of topsoil?</p> | <p><input type="checkbox"/></p> | <p><input type="checkbox"/></p> | <p><input checked="" type="checkbox"/></p> | <p><input type="checkbox"/></p> |
| <p>c) Be located on a geologic unit or soil that is unstable, or that would become unstable as a result of the project, and potentially result in on or off site landslide, lateral spreading, subsidence, liquefaction or collapse?</p> | <p><input type="checkbox"/></p> | <p><input type="checkbox"/></p> | <p><input checked="" type="checkbox"/></p> | <p><input type="checkbox"/></p> |
| <p>d) Be located on expansive soil, as defined in Table 18-1-B of the California Building Code (2001) creating substantial risks to life or property?</p> | <p><input type="checkbox"/></p> | <p><input type="checkbox"/></p> | <p><input checked="" type="checkbox"/></p> | <p><input type="checkbox"/></p> |

Issues	Potentially Significant Impact	Less than Significant with Mitigation Incorporated	Less than Significant	No Impact
e) Have soils incapable of adequately supporting the use of septic tanks or alternative wastewater disposal systems where sewers are not available for the disposal of wastewater?	<input type="checkbox"/>	<input type="checkbox"/>	<input checked="" type="checkbox"/>	<input type="checkbox"/>

SUBSTANTIATION: (Check if project is located in the Geologic Hazards Overlay District):

- a) **Less than Significant Impact.** The Project site is not located on or near any Alquist Priolo Fault Zone, nor does the Safety Element of the County General Plan identify fault zones in the vicinity of the Project site. The Project site will not be occupied by humans, although it will be visited periodically for maintenance and operation of the water treatment plant. Therefore, exposure of humans to risks from seismic related hazards would be very small. The Project site is not located in a liquefaction area. The site is flat as is the surrounding area so risk from landslides is very unlikely.
- b) **Less than Significant Impact.** Portions of the project site will be graded during the construction of the evaporation ponds and the placement of the package water treatment plant. Construction activities that involve one acre or more are required to obtain coverage under the Statewide NPDES permits for construction and related activities from the State Water Resources Control Board (SWRCB). The permit requires that the property owner/developer prepare and implement a project specific SWPPP, which includes BMPs intended to reduce erosion, sedimentation, and non-permitted discharges of materials during construction. The BMPs to be used during the construction typically include gravel bags, silt fencing, and general good housekeeping measures to prevent storm water contact with construction materials and discharges of materials during construction. The project proponent will develop and implement a SWPPP, which demonstrates compliance with the state NPDES permit, and provides protection of water quality during construction phases.
- c) **Less than Significant Impact.** Soils on the site are not prone to landslides, lateral spreading, subsidence, liquefaction or collapse. Grading/excavation and construction of the evaporation ponds will be done in compliance with applicable county requirements.
- d) **Less than Significant Impact.** The Project site is not located in an area that contains expansive soils.

Issues	Potentially Significant Impact	Less than Significant with Mitigation Incorporated	Less than Significant	No Impact
--------	--------------------------------	--	-----------------------	-----------

- e) **Less than Significant Impact.** In order to prevent ground infiltration of the brine waste that will be placed in the evaporation ponds the ponds will be lined with membrane composite liner material. Design and construction of the evaporation ponds will meet all applicable requirements of the Lahontan Regional Water Quality Control Board.

VII. GREENHOUSE GAS EMISSIONS - Would the project:

- | | | | | |
|--|--------------------------|--------------------------|-------------------------------------|--------------------------|
| a) Generate greenhouse gas emissions, either directly or indirectly, that may have a significant impact on the environment? | <input type="checkbox"/> | <input type="checkbox"/> | <input checked="" type="checkbox"/> | <input type="checkbox"/> |
| b) Conflict with any applicable plan, policy or regulation of an agency adopted for the purpose of reducing the emissions of greenhouse gases? | <input type="checkbox"/> | <input type="checkbox"/> | <input checked="" type="checkbox"/> | <input type="checkbox"/> |

SUBSTANTIATION:

- a) **Less than Significant Impact.** There are no published and adopted thresholds to use to determine the level of significance for the project emissions. However, a few things can be taken into consideration. First, the project’s emissions are minor. This is based on the draft thresholds published by other air districts such as the SCAQMD.

The SCAQMD is in the process of preparing recommended significance thresholds for greenhouse gases for local lead agency consideration (“SCAQMD draft local agency threshold”); however, the SCAQMD Board has not approved the thresholds as of the date of the NOP for local lead agencies to utilize in assessing impacts (SCAQMD 2010). Tier 3 consists of screening values which would be applicable to this project. A project’s construction emissions are averaged over 30 years and are added to a project’s operational emissions. If a project’s emissions are under one of the following screening thresholds, then the project is less than significant:

- All land use types: 3,000 Metric Tons of Carbon Dioxide Equivalent (MTCO₂e) per year.

<i>Issues</i>	<i>Potentially Significant Impact</i>	<i>Less than Significant with Mitigation Incorporated</i>	<i>Less than Significant</i>	<i>No Impact</i>
---------------	---------------------------------------	---	------------------------------	------------------

Based on land use type:

- Residential: 3,500 MTCO₂e per year
- Commercial: 1,400 MTCO₂e per year
- Mixed use: 3,000 MTCO₂e per year

The proposed project would be categorized as “all land use types”

Greenhouse Gas emissions from the construction and operation of the project would consist primarily of emissions from construction equipment during grading and the operation of the small package water treatment plant. Emissions would be below 3,000 MTCO₂e per year.

- b) **Less than Significant.** The County has not yet adopted plans policies or regulations to address Greenhouse Gas emissions reduction. Therefore the project would not conflict with such a plan.

VIII. HAZARDS AND HAZARDOUS MATERIALS - Would the project:

- | | | | | |
|--|--------------------------|--------------------------|-------------------------------------|--------------------------|
| a) Create a significant hazard to the public or the environment through the routine transport, use, or disposal of hazardous materials? | <input type="checkbox"/> | <input type="checkbox"/> | <input checked="" type="checkbox"/> | <input type="checkbox"/> |
| b) Create a significant hazard to the public or the environment through reasonably foreseeable upset and accident conditions involving the release of hazardous materials into the environment? | <input type="checkbox"/> | <input type="checkbox"/> | <input checked="" type="checkbox"/> | <input type="checkbox"/> |
| c) Emit hazardous emissions or handle hazardous or acutely hazardous materials, substances, or waste within one-quarter mile of an existing or proposed school? | <input type="checkbox"/> | <input type="checkbox"/> | <input checked="" type="checkbox"/> | <input type="checkbox"/> |
| d) Be located on a site which is included on a list of hazardous materials sites compiled pursuant to Government Code Section 65962.5 and, as a result, would it create a significant hazard to the public or the environment? | <input type="checkbox"/> | <input type="checkbox"/> | <input checked="" type="checkbox"/> | <input type="checkbox"/> |

Issues	Potentially Significant Impact	Less than Significant with Mitigation Incorporated	Less than Significant	No Impact
e) For a project located within an airport land use plan or, where such a plan has not been adopted, within two miles of a public airport or public use airport, would the project result in a safety hazard for people residing or working in the project area?	<input type="checkbox"/>	<input type="checkbox"/>	<input type="checkbox"/>	<input checked="" type="checkbox"/>
f) For a project within the vicinity of a private airstrip, would the project result in a safety hazard for people residing or working in the project area?	<input type="checkbox"/>	<input type="checkbox"/>	<input type="checkbox"/>	<input checked="" type="checkbox"/>
g) Impair implementation of or physically interfere with an adopted emergency response plan or emergency evacuation plan?	<input type="checkbox"/>	<input type="checkbox"/>	<input checked="" type="checkbox"/>	<input type="checkbox"/>
h) Expose people or structures to a significant risk of loss, injury or death involving wildland fires, including where wildlands are adjacent to urbanized areas or where residences are intermixed with wildlands?	<input type="checkbox"/>	<input type="checkbox"/>	<input checked="" type="checkbox"/>	<input type="checkbox"/>

SUBSTANTIATION:

a) **Less than Significant Impact.** Construction activities associated with the Project proposed would use a limited amount of hazardous materials. Construction vehicles onsite may require routine or emergency maintenance that could result in minor releases of oil, diesel fuel, transmission fluid, or other materials. Relevant construction materials may include asphalt, tar, paints, coatings and solvents. These would be used on a limited basis, both in terms of volume and duration by professionals trained in their appropriate use. The potential for the release of these materials is considered low and, even if a release were to occur, it would not result in a significant hazard to the public, surrounding uses, or the environment due to the small quantities of these materials associated with construction vehicles and the distance of the project site from other land uses.

In addition, the project will comply with all County, State, and fire department safety codes and regulations related to the transportation, use, and storage of hazardous materials during construction-related activities. Therefore, no significant adverse impacts are identified or anticipated and no mitigation measures are required.

<i>Issues</i>	<i>Potentially Significant Impact</i>	<i>Less than Significant with Mitigation Incorporated</i>	<i>Less than Significant</i>	<i>No Impact</i>
---------------	---------------------------------------	---	------------------------------	------------------

- b) **Less than Significant Impact.** All County, State, and fire department safety codes and regulations will be adhered to regarding the transportation, use, and storage of these materials during construction related activities of the project. Therefore, no significant adverse impacts are identified or anticipated and no mitigation measures are required.
- c) **Less than Significant Impact.** There are no existing or proposed schools within one quarter mile of the project site. The nearest school (Silver Valley High School) is located approximately 3 miles south of the project site. Therefore, no significant adverse impacts are identified or anticipated and no mitigation measures are required.
- d) **Less than Significant Impact.** The Project site is not included on a list of hazardous materials sites compiled pursuant to Government Code Section 65962.5.
- e) **No Impact.** The project site is not located within an airport land use plan. The nearest airport to the project site is the Barstow-Daggett Airport, located approximately 7.1 miles southeast of the project site. In addition, due to the distance to the airport, the project would not put structures or people at risk of a safety hazard related to a nearby airport. Therefore, no impacts are identified or anticipated and no mitigation measures are required.
- f) **No Impact.** The project is not within the vicinity of a private airstrip, and would not result in a safety hazard for people residing or working in the area. Therefore, no impacts are identified or anticipated and no mitigation measures are required.
- g) **Less than Significant Impact.** The proposed project is not anticipated to interfere with the emergency response routes. In addition, since the Project does not involve large numbers of persons living and/or working at the site, project implementation would not result in a substantial exposure of humans to risk in the case of an emergency. Therefore, no significant adverse impacts are identified or anticipated and no mitigation measures are required.
- h) **Less than Significant Impact.** Based on San Bernardino County General Plan Hazards Overlay Map, the project is not located within a fire hazard area. In addition, in the event of a fire on the project site exposure to loss, injury or death from a wildland is unlikely since very few persons are likely to be on the site at any time and the lack of fuel around the only

<i>Issues</i>	<i>Potentially Significant Impact</i>	<i>Less than Significant with Mitigation Incorporated</i>	<i>Less than Significant</i>	<i>No Impact</i>
---------------	---------------------------------------	---	------------------------------	------------------

structure that could possibly bum (the small water treatment plant) makes the possibility of properly loss remote. Therefore, no significant adverse impacts are identified or anticipated and no mitigation measures are required.

IX. HYDROLOGY AND WATER QUALITY - Would the project:

- | | | | | |
|--|--------------------------|--------------------------|-------------------------------------|--------------------------|
| a) Violate any water quality standards or waste discharge requirements? | <input type="checkbox"/> | <input type="checkbox"/> | <input checked="" type="checkbox"/> | <input type="checkbox"/> |
| b) Substantially deplete groundwater supplies or interfere substantially with groundwater recharge such that there would be a net deficit in aquifer volume or a lowering of the local groundwater table level (e.g., the production rate of pre-existing nearby wells would drop to a level, which would not support existing land uses or planned uses for which permits have been granted)? | <input type="checkbox"/> | <input type="checkbox"/> | <input checked="" type="checkbox"/> | <input type="checkbox"/> |
| c) Substantially alter the existing drainage pattern of the site or area, including through the alteration of the course of a stream or river, in a manner that would result in substantial erosion or siltation on- or off-site? | <input type="checkbox"/> | <input type="checkbox"/> | <input checked="" type="checkbox"/> | <input type="checkbox"/> |
| d) Substantially alter the existing drainage pattern of the site or area, including through the alteration of the course of a stream or river, or substantially increase the rate or amount of surface runoff in a manner which would result in flooding on- or off-site? | <input type="checkbox"/> | <input type="checkbox"/> | <input checked="" type="checkbox"/> | <input type="checkbox"/> |
| e) Create or contribute runoff water which would exceed the capacity of existing or planned storm water drainage systems or provide substantial additional sources of polluted runoff? | <input type="checkbox"/> | <input type="checkbox"/> | <input checked="" type="checkbox"/> | <input type="checkbox"/> |
| f) Otherwise substantially degrade water quality? | <input type="checkbox"/> | <input type="checkbox"/> | <input checked="" type="checkbox"/> | <input type="checkbox"/> |
| g) Place housing within a 100-year flood hazard area as mapped on a Federal Flood Hazard Boundary or Flood Insurance Rate Map or other flood hazard delineation map? | <input type="checkbox"/> | <input type="checkbox"/> | <input checked="" type="checkbox"/> | <input type="checkbox"/> |

<i>Issues</i>	<i>Potentially Significant Impact</i>	<i>Less than Significant with Mitigation Incorporated</i>	<i>Less than Significant</i>	<i>No Impact</i>
h) Place within a 100-year flood hazard area structure which would impede or redirect flood flows?	<input type="checkbox"/>	<input type="checkbox"/>	<input checked="" type="checkbox"/>	<input type="checkbox"/>
i) Expose people or structures to a significant risk of loss, injury or death involving flooding, including flooding as a result of the failure of a levee or dam?	<input type="checkbox"/>	<input type="checkbox"/>	<input checked="" type="checkbox"/>	<input type="checkbox"/>
j) Inundation by seiche, tsunami, or mudflow?	<input type="checkbox"/>	<input type="checkbox"/>	<input checked="" type="checkbox"/>	<input type="checkbox"/>

SUBSTANTIATION:

- a) **Less than Significant Impact.** The proposed project could potentially result in short-term adverse construction related impacts to surface water quality. Grading and construction activities will expose ground surfaces and increase the potential for erosion and the off-site transport of sediment in storm water runoff. Additionally, construction related activities may spill chemicals and dissolved solids from construction equipments, which could potentially pollute runoff water.

Construction activities that involve one acre or more are required to obtain coverage under the Statewide NPDES permits for construction and related activities from the State WRCB. The permit requires that the property owner/developer prepare and implement a project specific SWPPP, which includes BMPs intended to reduce erosion, sedimentation, and non-permitted discharges of materials during construction. The BMPs to be used during the construction typically include gravel bags, silt fencing, and general good housekeeping measures to prevent storm water contact with construction materials and discharges of materials during construction. The project proponent will develop and implement a SWPPP, which demonstrates compliance with the state NPDES permit, and provides protection of water quality during construction phases.

Typically, the following would occur during construction of the project:

- **Erosion Control.** Employ measures to prevent the movement of soil by wind or water during construction and may include watering, and physical barriers to the movement of soil particles.
- **Tracking of Soil.** Employ measures to effectively minimize the tracking of soil by

<i>Issues</i>	<i>Potentially Significant Impact</i>	<i>Less than Significant with Mitigation Incorporated</i>	<i>Less than Significant</i>	<i>No Impact</i>
---------------	---------------------------------------	---	------------------------------	------------------

vehicles and may include gravel driveways, wheel washes and street sweeping.

- **Wastes and Cleanup.** The SWPPP must also address washout, cleanup and disposal related to debris, trash, concrete, asphalt, paint, coatings, solvents and other materials applicable to preparation and construction at the project site.
- **Other Reasonable BMPs.** The SWPPP must also implement other applicable BMP's as needed to keep pollutants away from stormwater. The SWPPP must also identify additional applicable measures taken during the storm season and when storms are anticipated.

In addition, a WQMP will be prepared for the Project and will incorporate requirements within the San Bernardino County's Water Quality Management Plan (WQMP). The Project will reflect the San Bernardino County's WQMP by implementing various measures that typically include, but are not limited to, guidance, operation and maintenance for all source control, site design, and treatment control BMP's; that requires operation and maintenance, which include maximizing canopy interception and water conservation, landscape planning, efficient irrigation, storm drain system signage, litter control, employee training/education program, protect slopes and channels, common area catch basin inspection, energy dissipaters, pervious concrete/alternative materials, and storm water filtration systems. Standard conditions of the San Bernardino County WQMP also include providing a thorough description of operation and maintenance activities, and providing a schedule of the frequency of operation and maintenance for each BMP.

The inclusion of the aforementioned standard conditions, which reflect the San Bernardino County's WQMP and BMP's, will treat future storm water runoff to levels of water quality deemed acceptable by the Lahontan RWQCB.

Furthermore, conformance with all County, State and federal water quality and water discharge standards, limit the potential water quality impacts to less than significant level. Therefore, no significant adverse impacts are identified or anticipated and no mitigation measures are required.

<i>Issues</i>	<i>Potentially Significant Impact</i>	<i>Less than Significant with Mitigation Incorporated</i>	<i>Less than Significant</i>	<i>No Impact</i>
---------------	---------------------------------------	---	------------------------------	------------------

- b) **Less than Significant Impact.** The proposed project does not include the development of any uses that will require substantial amount of water or groundwater. The project will result in a slight increase in impervious surfaces within the project area due to the installation of liners in the evaporation ponds and impervious surface created for installation of the water treatment plant. However, the resulting loss in groundwater would be very small. Therefore, no significant adverse impacts are identified or anticipated and no mitigation measures are required.
- c) **Less than Significant Impact.** With the exception of the drainage feature located to the east of the Project (see discussion under Biological Resources), drainage in the vicinity of the project is relatively undefined surface flow.
- d, e) **Less than Significant Impact.** As discussed in the Jurisdictional Assessment (see Appendix B) the minor drainage areas on site will be avoided. In addition, due to the very small scale of the project and extremely limited amount of impervious surfaces that will be created, impacts would be less than significant. The potential for pollutant run off will be ameliorated by the BMP's that will be included in the WQMP.
- f) **Less than Significant Impact.** As a standard construction procedure, the County will prepare and implement a WQMP, consistent with the Municipal Separate Storm Sewer System (MS4) permit that will control and reduce polluted urban runoff from the project site. A WQMP is required to provide specific BMPs to reduce urban runoff pollution.

Given its limited nature Project generated runoff would be minimal. In addition, the project will reflect the San Bernardino County's WQMP by implementing various measures that may include , but are not limited to, guidance, operation and maintenance for all source control, site design, and treatment control BMP's; that requires operation and maintenance, trash storage areas and litter control, employee training/education program , protect slopes and channels, common area catch basin inspection, energy dissipaters, pervious concrete/alternative materials, and storm filter filtration systems. Standard conditions of the San Bernardino County WQMP also include providing a thorough description of operation and maintenance activities, and providing a schedule of the frequency of operation and maintenance for each BMP. Therefore, no significant adverse impacts are identified or

<i>Issues</i>	<i>Potentially Significant Impact</i>	<i>Less than Significant with Mitigation Incorporated</i>	<i>Less than Significant</i>	<i>No Impact</i>
---------------	---------------------------------------	---	------------------------------	------------------

anticipated and no mitigation measures are required.

g, h) **Less than Significant Impact.** Based on San Bernardino County General Plan Hazard Overlay Map, the project site is not located within a 100-year flood hazard zone as mapped by Federal Emergency Management Agency. In addition, the project does not propose to construct housing units or structures within the project site. Therefore, impacts to housing or structures within the 100-year flood zone will be less than significant.

i) **Less than Significant Impact.** According to the San Bernardino County General Plan the proposed project is not within a 100-year flood plain or a Dam Failure Inundation Zone. In addition, there are no significant water bodies or levees located near the project site. Thus, impacts to people or structures as a result of a dam or levee failure will be less than significant and no mitigation measures are required.

j) **Less than Significant Impact.** The proposed project is not located in the vicinity of any large body of water. In addition, impacts from mudflow are unlikely due to the minimal precipitation of the project site and surrounding area. Furthermore, the project site is not located near a large body of water or the ocean. Therefore, impacts relating to the exposure of people or structures to inundation by seiche, tsunami, or mudflow will be less than significant.

X. LAND USE AND PLANNING - Would the project:

- | | | | | |
|---|--------------------------|--------------------------|-------------------------------------|-------------------------------------|
| a) Physically divide an established community? | <input type="checkbox"/> | <input type="checkbox"/> | <input type="checkbox"/> | <input checked="" type="checkbox"/> |
| b) Conflict with any applicable land use plan, policy, or regulation of an agency with jurisdiction over the project (including, but not limited to the general plan, specific plan, local coastal program, or zoning ordinance) adopted for the purpose of avoiding or mitigating an environmental effect? | <input type="checkbox"/> | <input type="checkbox"/> | <input checked="" type="checkbox"/> | <input type="checkbox"/> |
| c) Conflict with any applicable habitat conservation plan or natural community conservation plan? | <input type="checkbox"/> | <input type="checkbox"/> | <input checked="" type="checkbox"/> | <input type="checkbox"/> |

Issues	Potentially Significant Impact	Less than Significant with Mitigation Incorporated	Less than Significant	No Impact
--------	--------------------------------	--	-----------------------	-----------

SUBSTANTIATION:

- a) **No Impact.** The Project site is surrounded by vacant land, is a component of the Calico Ghost Town Regional Park and is not located within or near an established community. The nearest residential neighborhood is approximately 3,500 feet to the south of the Project site. Therefore, no impacts are identified or anticipated and no mitigation measures are required.
- b) **Less than Significant Impact.** The proposed Project is consistent with the land use element of the San Bernardino County General Plan, and the uses proposed are in accordance with uses allowed under the Resource Conservation land use designation that applies to the Project site. Therefore, no significant adverse impacts are identified or anticipated and no mitigation measures are required.
- c) **Less than Significant Impact.** The project site is not located within any local or regional applicable habitat conservation plan or natural community conservation plan. As such, impacts related to any applicable conservation plan as a result of proposed project will be less than significant.

XI. MINERAL RESOURCES - Would the project:

- a) Result in the loss of availability of a known mineral resource that would be of value to the region and the residents of the state?
- b) Result in the loss of availability of a locally important mineral resource recovery site delineated on a local general plan, specific plan or other land use plan?

SUBSTANTIATION: (Check if project is located within the Mineral Resource Zone Overlay):
 MRZ-3a

- a) **No Impact.** According to the Mineral Land Classification of the San Bernardino County Area (California Department of Conservation Division of Mines and Geology), the proposed project is located within a designated Mineral Resource Zone 4 (MRZ-4). MRZ-4 is defined as areas where available information is inadequate for assignment to any other MRZ zone. Therefore, there are no known mineral resources on the project site that would be of value to the region and the residents of the State. Additionally, although they have occurred near

<i>Issues</i>	<i>Potentially Significant Impact</i>	<i>Less than Significant with Mitigation Incorporated</i>	<i>Less than Significant</i>	<i>No Impact</i>
---------------	---------------------------------------	---	------------------------------	------------------

the Project site in the past, no mining operations currently occur on or in proximity of the site. Therefore, no impacts are identified or anticipated and no mitigation measures are required.

- b) **No Impact.** According to the San Bernardino County General Plan, the project site is not located in the vicinity of an important mineral resource recovery site, and would not result in the loss of availability of an important mineral resource. Therefore, no impacts are identified or anticipated and no mitigation measures are required.

XII. NOISE - Would the project result in:

- | | | | | |
|---|--------------------------|--------------------------|-------------------------------------|-------------------------------------|
| a) Exposure of persons to or generation of noise levels in excess of standards established in the local general plan or noise ordinance, or applicable standards of other agencies? | <input type="checkbox"/> | <input type="checkbox"/> | <input checked="" type="checkbox"/> | <input type="checkbox"/> |
| b) Exposure of persons to or generation of excessive groundborne vibration or groundborne noise levels? | <input type="checkbox"/> | <input type="checkbox"/> | <input checked="" type="checkbox"/> | <input type="checkbox"/> |
| c) A substantial permanent increase in ambient noise levels in the project vicinity above levels existing without the project? | <input type="checkbox"/> | <input type="checkbox"/> | <input checked="" type="checkbox"/> | <input type="checkbox"/> |
| d) A substantial temporary or periodic increase in ambient noise levels in the project vicinity above levels existing without the project? | <input type="checkbox"/> | <input type="checkbox"/> | <input checked="" type="checkbox"/> | <input type="checkbox"/> |
| e) For a project located within an airport land use plan or, where such a plan has not been adopted, within two miles of a public airport or public use airport, would the project expose people residing or working in the project area to excessive noise levels? | <input type="checkbox"/> | <input type="checkbox"/> | <input type="checkbox"/> | <input checked="" type="checkbox"/> |
| f) For a project within the vicinity of a private airstrip, would the project expose people residing or working in the project area to excessive noise levels? | <input type="checkbox"/> | <input type="checkbox"/> | <input type="checkbox"/> | <input checked="" type="checkbox"/> |

Issues	Potentially Significant Impact	Less than Significant with Mitigation Incorporated	Less than Significant	No Impact
SUBSTANTIATION: (Check if the project is located in the Noise Hazard Overlay District <input type="checkbox"/> or is subject to severe noise levels according to the General Plan Noise Element <input type="checkbox"/>):				

- a) **Less than Significant Impact.** Section 82.18.030 of the San Bernardino County Development Code provides an exterior noise standard of 65 dBA Ldn or less and an interior noise standard of 45 dBA Ldn or less for residential uses. The Development Code also provides guidance that can be used to define substantial changes in noise levels that may be caused by a project. The thresholds below generally apply to transportation noise that is usually expressed in terms of average noise exposure during a 24-hour period, such as the Ldn or CNEL. Project-generated increases in noise levels that exceed those outlined in the thresholds below and that affect existing noise-sensitive land uses (receptors) are considered Substantial; therefore, they would constitute a significant noise impact.

Very little noise would be generated by the Project once operational. Sources of noise would be limited to operation of the water treatment plant, vehicle noise related to periodic visits to the site for maintenance of the plan and the evaporation ponds and, during wet winter months, periodic truck hauling of brine water. None of these activities are expected to exceed the aforementioned county noise standards since the nearest residence or other sensitive noise receptor is approximately 3,500 feet from the project site, and the noise generated by project traffic would be negligible.

Short-Term Construction Noise Impacts

Project construction activities could generate a periodic short-term noise increase as high as 90 dBA at a distance of 50 feet from the use of a backhoe (Federal Transit Agency, 1995). However, as a rule of thumb noise levels would drop by 6 -dB for every doubling of distance. Since the nearest sensitive receptor is over 3,500 feet from the Project site, noise impacts from construction would not exceed County standards.

Vibration Impacts

It is anticipated that the vibration levels caused by a vibratory roller, which would cause the greatest amount of vibration of any construction equipment that may be used, would be 0.026 inches per second Peak Particle Velocity (PPV) at a distance of 200 feet. The amount of 0.026 PPV is well below the 0.2 inch per second PPV threshold established by the

<i>Issues</i>	<i>Potentially Significant Impact</i>	<i>Less than Significant with Mitigation Incorporated</i>	<i>Less than Significant</i>	<i>No Impact</i>
---------------	---------------------------------------	---	------------------------------	------------------

County of San Bernardino Development Code (Section 82.18.030). Since the nearest receptors that would be affected are the residences approximately 3,500 feet away, no vibration impacts would occur.

Therefore, no significant adverse impacts are identified or anticipated and no mitigation measures are required.

- b) **Less than Significant Impact.** Noise and vibration increases resulting from project implementation would be negligible, especially since the nearest noise sensitive receptor is over 3,500 feet from the project site (see discussion under impact "a" above). Therefore, no significant adverse impacts are identified or anticipated and no mitigation measures are required.
- c, d) **Less than Significant Impact.** Noise increases resulting from project implementation would be negligible, especially since the nearest noise sensitive receptor is over 3,500 feet from the project site (see discussion under impact "a" above). Therefore, no significant adverse impacts are identified or anticipated and no mitigation measures are required.
- e, f) **No Impact.** The project site is not located within an airport land use plan. The nearest airport is the Barstow-Daggett Airport, located approximately 7.1 miles southeast of the project site. There are no private airstrips in the Project vicinity. In addition, there are no habitable structures proposed with the Project. Therefore, no impacts are identified or anticipated and no mitigation measures are required.

XIII. POPULATION AND HOUSING - Would the project:

- | | | | | |
|---|--------------------------|--------------------------|--------------------------|-------------------------------------|
| a) Induce substantial population growth in an area, either directly (for example, by proposing new homes and businesses) or indirectly (for example, through extension of roads or other infrastructure)? | <input type="checkbox"/> | <input type="checkbox"/> | <input type="checkbox"/> | <input checked="" type="checkbox"/> |
| b) Displace substantial numbers of existing housing, necessitating the construction of replacement housing elsewhere? | <input type="checkbox"/> | <input type="checkbox"/> | <input type="checkbox"/> | <input checked="" type="checkbox"/> |

Issues	Potentially Significant Impact	Less than Significant with Mitigation Incorporated	Less than Significant	No Impact
c) Displace substantial numbers of people, necessitating the construction of replacement housing elsewhere?	<input type="checkbox"/>	<input type="checkbox"/>	<input type="checkbox"/>	<input checked="" type="checkbox"/>

SUBSTANTIATION:

- a) **No Impact.** The Propose project will not induce substantial population growth. The purpose of this project is specifically to provide treatment for well water that currently supplies the Calico Ghost Town Regional Park, No additional supply of water will result from implementation of the Project and it would not have the potential to induce population growth. Therefore, no impacts are identified or anticipated and no mitigation measures are required.
- b, c) **No Impact.** There are no homes or resident populations on or near the project site, so no housing or persons will be displaced. Therefore, no impacts are identified or anticipated and no mitigation measures are required.

XIV. PUBLIC SERVICES

- a) Would the project result in substantial adverse physical impacts associated with the provision of new or physically altered governmental facilities, need for new or physically altered governmental facilities, the construction of which could cause significant environmental impacts, in order to maintain acceptable service ratios, response times or other performance objectives for any of the public services:

Fire Protection?	<input type="checkbox"/>	<input type="checkbox"/>	<input type="checkbox"/>	<input checked="" type="checkbox"/>
Police Protection?	<input type="checkbox"/>	<input type="checkbox"/>	<input type="checkbox"/>	<input checked="" type="checkbox"/>
Schools?	<input type="checkbox"/>	<input type="checkbox"/>	<input type="checkbox"/>	<input checked="" type="checkbox"/>
Parks?	<input type="checkbox"/>	<input type="checkbox"/>	<input type="checkbox"/>	<input checked="" type="checkbox"/>
Other Public Facilities?	<input type="checkbox"/>	<input type="checkbox"/>	<input type="checkbox"/>	<input checked="" type="checkbox"/>

<i>Issues</i>	<i>Potentially Significant Impact</i>	<i>Less than Significant with Mitigation Incorporated</i>	<i>Less than Significant</i>	<i>No Impact</i>
<i>SUBSTANTIATION:</i>				

a) **Less than Significant Impact.**

Fire Protection

No Impact. Based on the nature of the proposed project, it is not anticipated to result in direct population growth which would, in turn, place additional demand on existing facilities and services provided by the County Fire Department. The additional incremental demand that would be placed on existing facilities and services by the construction of the small water treatment facility and associated evaporation ponds is considered negligible. Therefore, no significant adverse impacts are identified or anticipated and no mitigation measures are required.

Police Protection

No Impact. Based on the nature of the proposed project, it is not anticipated to result in direct population growth which would place additional demand on existing Sheriff facilities and services. The additional incremental demand that would be placed on existing facilities and services by the construction of the small water treatment facility and associated evaporation ponds is considered negligible. Therefore, no significant adverse impacts are identified or anticipated and no mitigation measures are required.

Schools

No Impact. The Project would not add any residences or businesses that would increase population or students in the area. Therefore, no impacts are identified or anticipated and no mitigation measures are required.

Parks and Other Public Facilities

No Impact. The Project would not add any residences or businesses that would increase population or demand for parks or other public facilities and would not add capacity at the Regional Park. Therefore, no impacts are identified or anticipated and no mitigation measures are required.

<i>Issues</i>	<i>Potentially Significant Impact</i>	<i>Less than Significant with Mitigation Incorporated</i>	<i>Less than Significant</i>	<i>No Impact</i>
---------------	---------------------------------------	---	------------------------------	------------------

XV. RECREATION

- | | | | | |
|--|--------------------------|--------------------------|--------------------------|-------------------------------------|
| a) Would the project increase the use of existing neighborhood and regional parks or other recreational facilities such that substantial physical deterioration of the facility would occur or be accelerated? | <input type="checkbox"/> | <input type="checkbox"/> | <input type="checkbox"/> | <input checked="" type="checkbox"/> |
| b) Does the project include recreational facilities or require the construction or expansion of recreational facilities which might have an adverse physical effect on the environment? | <input type="checkbox"/> | <input type="checkbox"/> | <input type="checkbox"/> | <input checked="" type="checkbox"/> |

SUBSTANTIATION:

- a) **No Impact.** The Project would not add any residences or businesses that would increase population or demand for parks or other public facilities and would not add capacity at the Regional Park. Therefore, no impacts are identified or anticipated and no mitigation measures are required.
- b) **No Impact.** The Project would not add any residences or businesses that would increase population or demand for parks or other public facilities and would not add capacity at the Regional Park. Therefore, no impacts are identified or anticipated and no mitigation measures are required.

XVI. TRANSPORTATION/TRAFFIC - Would the project:

- | | | | | |
|---|--------------------------|--------------------------|-------------------------------------|--------------------------|
| a) Cause an increase in traffic, which is substantial in relation to the existing traffic load and capacity of the street system (i.e., result in a substantial increase in either the number of vehicle trips, the volume to capacity ratio on roads, or congestion at intersections)? | <input type="checkbox"/> | <input type="checkbox"/> | <input checked="" type="checkbox"/> | <input type="checkbox"/> |
| b) Exceed, either individually or cumulatively, a level of service standard established by the county congestion management agency for designated roads or highways? | <input type="checkbox"/> | <input type="checkbox"/> | <input checked="" type="checkbox"/> | <input type="checkbox"/> |

Issues	Potentially Significant Impact	Less than Significant with Mitigation Incorporated	Less than Significant	No Impact
c) Result in a change in air traffic patterns, including either an increase in traffic levels or a change in location that results in substantial safety risks?	<input type="checkbox"/>	<input type="checkbox"/>	<input type="checkbox"/>	<input checked="" type="checkbox"/>
d) Substantially increase hazards due to a design feature (e.g., sharp curves or dangerous intersections) or incompatible uses (e.g., farm equipment)?	<input type="checkbox"/>	<input type="checkbox"/>	<input checked="" type="checkbox"/>	<input type="checkbox"/>
e) Result in inadequate emergency access?	<input type="checkbox"/>	<input type="checkbox"/>	<input checked="" type="checkbox"/>	<input type="checkbox"/>
f) Result in inadequate parking capacity?	<input type="checkbox"/>	<input type="checkbox"/>	<input checked="" type="checkbox"/>	<input type="checkbox"/>
g) Conflict with adopted policies, plans, or programs supporting alternative transportation (e.g., bus turnouts, bicycle racks)?	<input type="checkbox"/>	<input type="checkbox"/>	<input checked="" type="checkbox"/>	<input type="checkbox"/>

SUBSTANTIATION:

- a) **Less than Significant Impact.** The increase in vehicle trips associated with the Project is expected to be extremely small. Operation and maintenance staff will not be housed at the Project site on a daily basis, and will visit the facility infrequently for maintenance purposes. During wet winter months truck will be used to haul away brine when rainy conditions dictate that this is necessary to maintain capacity within the evaporation ponds, but given the dry desert conditions of the site this is likely to be infrequent. Therefore, no significant adverse impacts are identified or anticipated and no mitigation measures are required.
- b) **Less than Significant Impact.** The Project traffic impacts on level of service for roadway would be negligible. Also see response under impact "a", above. Therefore, no significant adverse impacts are identified or anticipated and no mitigation measures are required.
- c) **No Impact.** The project will not affect or be affected by air traffic and will not cause an increase in safety risks to air travel. Therefore, no impacts are identified or anticipated and no mitigation measures are required.

<i>Issues</i>	<i>Potentially Significant Impact</i>	<i>Less than Significant with Mitigation Incorporated</i>	<i>Less than Significant</i>	<i>No Impact</i>
---------------	---------------------------------------	---	------------------------------	------------------

- d) **Less than Significant Impact.** The access driveway to the facility off of Ghost Town Road will be designed in accordance with applicable County standards including, but not limited to, intersection placement, spacing and design, and sight-distance. Therefore, no significant adverse impacts are identified or anticipated and no mitigation measures are required.
- e) **Less than Significant Impact.** Adequate access would be provided to the Project site and the project will not interfere with emergency access to the Calico Ghost Town Regional Park or other development in the vicinity of the project since. Also, since the project site will not be occupied by residents or by workers except on an occasional basis, risk exposure to persons that may be located on the Project site during an emergency would be negligible. Therefore, no significant adverse impacts are identified or anticipated and no mitigation measures are required.
- f) **Less than Significant Impact.** Adequate parking will be provided to accommodate automobiles and trucks that may periodically visit the Project site. Therefore, no significant adverse impacts are identified or anticipated and no mitigation measures are required.
- g) **Less than Significant Impact.** The Project would not conflict with policies, plans, or programs supporting alternative transportation, as they are not applicable to the Project site due to its nature. As mentioned above trips to the site will be infrequent and are only related to the maintenance and operation of the facility. Therefore, no significant adverse impacts are identified or anticipated and no mitigation measures are required.

XVII. UTILITIES AND SERVICE SYSTEMS - Would the project:

- a) Exceed wastewater treatment requirements of the applicable RWQCB?
- b) Require or result in the construction of new water or wastewater treatment facilities or expansion of existing facilities, the construction of which could cause significant environmental effects?

Issues	Potentially Significant Impact	Less than Significant with Mitigation Incorporated	Less than Significant	No Impact
c) Require or result in the construction of new storm water drainage facilities or expansion of existing facilities, the construction of which could cause significant environmental effects?	<input type="checkbox"/>	<input type="checkbox"/>	<input checked="" type="checkbox"/>	<input type="checkbox"/>
d) Have sufficient water supplies available to serve the project from existing entitlements and resources, or are new or expanded, entitlements needed?	<input type="checkbox"/>	<input type="checkbox"/>	<input type="checkbox"/>	<input checked="" type="checkbox"/>
e) Result in a determination by the wastewater treatment provider, which serves or may serve the project that it has adequate capacity to serve the project's projected demand in addition to the provider's existing commitments?	<input type="checkbox"/>	<input type="checkbox"/>	<input type="checkbox"/>	<input checked="" type="checkbox"/>
f) Be served by a landfill(s) with sufficient permitted capacity to accommodate the project's solid waste disposal needs?	<input type="checkbox"/>	<input type="checkbox"/>	<input checked="" type="checkbox"/>	<input type="checkbox"/>
g) Comply with federal, state, and local statutes and regulations related to solid waste?	<input type="checkbox"/>	<input type="checkbox"/>	<input checked="" type="checkbox"/>	<input type="checkbox"/>

SUBSTANTIATION:

- a) **Less than Significant Impact.** Except for the brine wastewater that is a by product of the water treatment process, no wastewater will be generated by the Project. Most of this water will be eliminated via the evaporation ponds. The water that may need to be trucked off the site when dictated by wet winter conditions will be properly disposed of in accordance with all applicable federal, state and local requirement include the requirements of the RWQCB. Therefore, no significant adverse Impacts are identified or anticipated and no mitigation measures are required.
- b) **Less than Significant Impact.** The Project is the construction of a small water treatment plant intended to improve the quality of water already being provided to the Calico Ghost Town Regional Park. As noted throughout this document the Project will not cause any significant adverse environmental impacts that cannot be mitigated to less-than-significant levels. Therefore, no significant adverse impacts are identified or anticipated and no mitigation measures are required.

<i>Issues</i>	<i>Potentially Significant Impact</i>	<i>Less than Significant with Mitigation Incorporated</i>	<i>Less than Significant</i>	<i>No Impact</i>
---------------	---------------------------------------	---	------------------------------	------------------

- c) **Less than Significant Impact.** The Project does not require the construction nor will it result in the construction of new drainage facilities. Therefore, no significant adverse impacts are identified or anticipated and no mitigation measures are required.
- d) **No Impact.** The Project will not create any new demand for potable water. Therefore, no impacts are identified or anticipated and no mitigation measures are required.
- e) **No Impact.** The Project will not create any new demand for wastewater treatment. Therefore, no impacts are identified or anticipated and no mitigation measures are required.
- f) **Less than Significant Impact.** The project will be required to abide by all federal, State, and local statues and regulations regarding what little solid waste is generated. The proposed project does not contemplate or anticipate any activities/uses that would exceed or otherwise require special consideration in relation to compliance with relevant solid waste handling/disposal statues and regulations. Therefore, no significant adverse impacts are identified or anticipated and no mitigation measures are required.
- g) **Less than Significant.** The project will be required to abide by all federal, State, and local statues and regulations regarding what little solid waste is generated. The proposed project does not contemplate or anticipate any activities/uses that would exceed or otherwise require special consideration in relation to compliance with relevant solid waste handling/disposal statues and regulations. Therefore, no significant adverse impacts are identified or anticipated and no mitigation measures are required.

XVIII. MANDATORY FINDINGS OF SIGNIFICANCE:

- a) Does the project have the potential to degrade the quality of the environment, substantially reduce the habitat of a fish or wildlife species, cause a fish or wildlife population to drop below self-sustaining levels, threaten to eliminate a plant or animal community, reduce the number or restrict the range of a rare or endangered plant or animal or eliminate important examples of the major periods of California history or prehistory?

<input type="checkbox"/>	<input checked="" type="checkbox"/>	<input type="checkbox"/>	<input type="checkbox"/>
--------------------------	-------------------------------------	--------------------------	--------------------------

Issues	Potentially Significant Impact	Less than Significant with Mitigation Incorporated	Less than Significant	No Impact
b) Does the project have impacts that are individually limited, but cumulatively considerable? (“Cumulatively considerable” means that the incremental effects of a project are considerable when viewed in connection with the effects of past projects, the effects of other current projects, and the effects of probable future projects)?	<input type="checkbox"/>	<input type="checkbox"/>	<input checked="" type="checkbox"/>	<input type="checkbox"/>
c) Does the project have environmental effects, which will cause substantial adverse effects on human beings, either directly or indirectly?	<input type="checkbox"/>	<input type="checkbox"/>	<input type="checkbox"/>	<input checked="" type="checkbox"/>

SUBSTANTIATION:

- a) **Less than Significant Impact with Mitigation.** The project site does not contain any critical habitat. However, the project site contains suitable nesting habitat for a number of different avian species. The vegetation within the project site could provide suitable nesting habitat for several migratory avian species. Implementation of mitigation measure MM BR1 will reduce impacts to suitable nesting habitat to less than significant. There is potential for the discovery of paleontological resources on the site, but the implementation of Mitigation Measures CR-1 through CR-5 would result in potential adverse impacts to such resources being less than significant.
- b) **Less than Significant Impact.** The project consists of installing a small water treatment facility and associated evaporation ponds, with the objective of improving the quality of water currently being supplied to the Calico Ghost Town Regional Park. The Project will not result in a significant increase in the demand for services, will not create a significant number of vehicle trips or emissions, and will not result in an increase in residential or employment generating development and therefore, will not result in an increase in residents or workers. In addition none of the potential impacts described under item "a" above are cumulative in nature.
- c) **Less than Significant Impact.** Only minimal quantities of hazardous materials, traffic and noise would be generated due to the Project, and the Project would not result in substantial direct or indirect adverse impacts. None of the impacts identified in this Initial Study have the potential to cause substantial adverse effects on human beings, either directly or indirectly.

MITIGATION MEASURES

Biological Resources:

BR-1: If vegetation removal, soil disturbance, or any other construction-related activity is to occur during the avian nesting season (February 1 through August 31), a preconstruction nesting bird survey shall be conducted not greater than seven days prior to initiation of construction. If nests are discovered, they shall be avoided by an appropriate buffer, as determined by a qualified wildlife biologist. The temporary “no construction” area would have to be maintained until the nest has completed its cycle, as determined by a qualified wildlife biologist. Once the nest cycle is complete and all nestlings have fledged and left the nest, then construction in the area could resume. Construction activity may only occur within the temporary “no construction” area at the discretion of a biological monitor. If initial ground-disturbing activities or site clearing is proposed to take place outside of the nesting season (September 1 through January 31), then a pre-construction survey would not be required and construction could commence unimpeded.

Cultural Resources:

CR-1: Prior to any earthmoving activities in the project area, a qualified Project Paleontologist shall develop a Paleontological Resource Impact Monitoring Program (PRIMP) associated with any resources found during construction within the project area. The PRIMP shall address appropriate sampling, analysis, documentation methodology and techniques used to obtain scientific information associated with each of the potentially impacted localities. The PRIMP shall require that all collected specimens be placed in an acceptable museum, repository or accredited institution, and the PRIMP must include a signed agreement between the Project Paleontologist and an accredited museum.

CR-2: Paleontologic monitoring shall be conducted during earthmoving activities that take place on intact Pleistocene-era fanglomerate deposits. It is estimated that intact deposits will be encountered about three feet below the modern ground surface. Earthmoving activities in areas where previously disturbed strata exist

need not be monitored. The Project Paleontologist shall have the authority to reduce or cease monitoring once it is determined that the probability of encountering fossils is low.

- CR-3:** If a paleontologic monitor finds fossil remains, earthmoving activities shall be diverted around fossil site until the remains have been recovered and authorization from the Project Paleontologist has been provided in writing to the site manager. The fossil site shall be delineated by yellow tape on lathe at a distance of no greater than 50 feet of the find. If the fossil site expands through discovery, the taped delineation shall be increased to provide the 50-foot buffer.
- CR-4:** If fossil remains are found, approximately 6,000 pounds of the surrounding rock matrix shall be recovered from the fossil site to allow for proper recovery of smaller fossil remains, The samples shall be processed and all vertebrate and representative samples of invertebrate and plant fossils shall be collect and curated. Any recovered fossil remains shall be prepared to the point of identification and identified to the lowest taxonomic level possible by the Project Paleontologist. These items shall then be curated at an approved repository following standard museum accession standards.
- CR-5:** If fossil remains are found, a final report outlining the results and findings shall be prepared by the Project Paleontologist for submission to the County of San Bernardino and the museum repository following accessing of the fossil collection. The report shall consist of the following: a description of the geology and stratigraphy of the excavations, a summary of field and laboratory methods used, a faunal list of species recovered and an inventory of cataloged fossil specimens, an evaluation of the scientific importance of the specimens, and a discussion of the relationship of any newly recorded fossils to relevant fossils known to have been previously recorded in the fossil bearing rock unit.